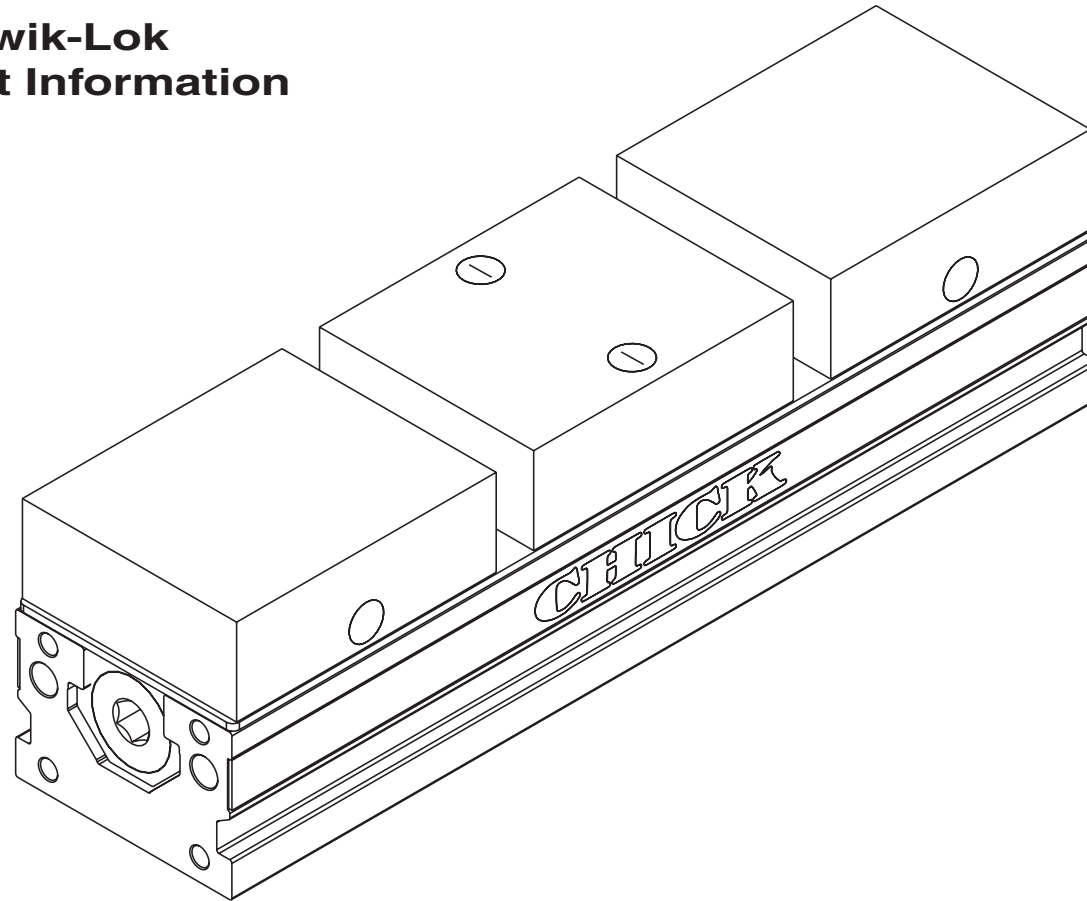


# **M** MQL1040

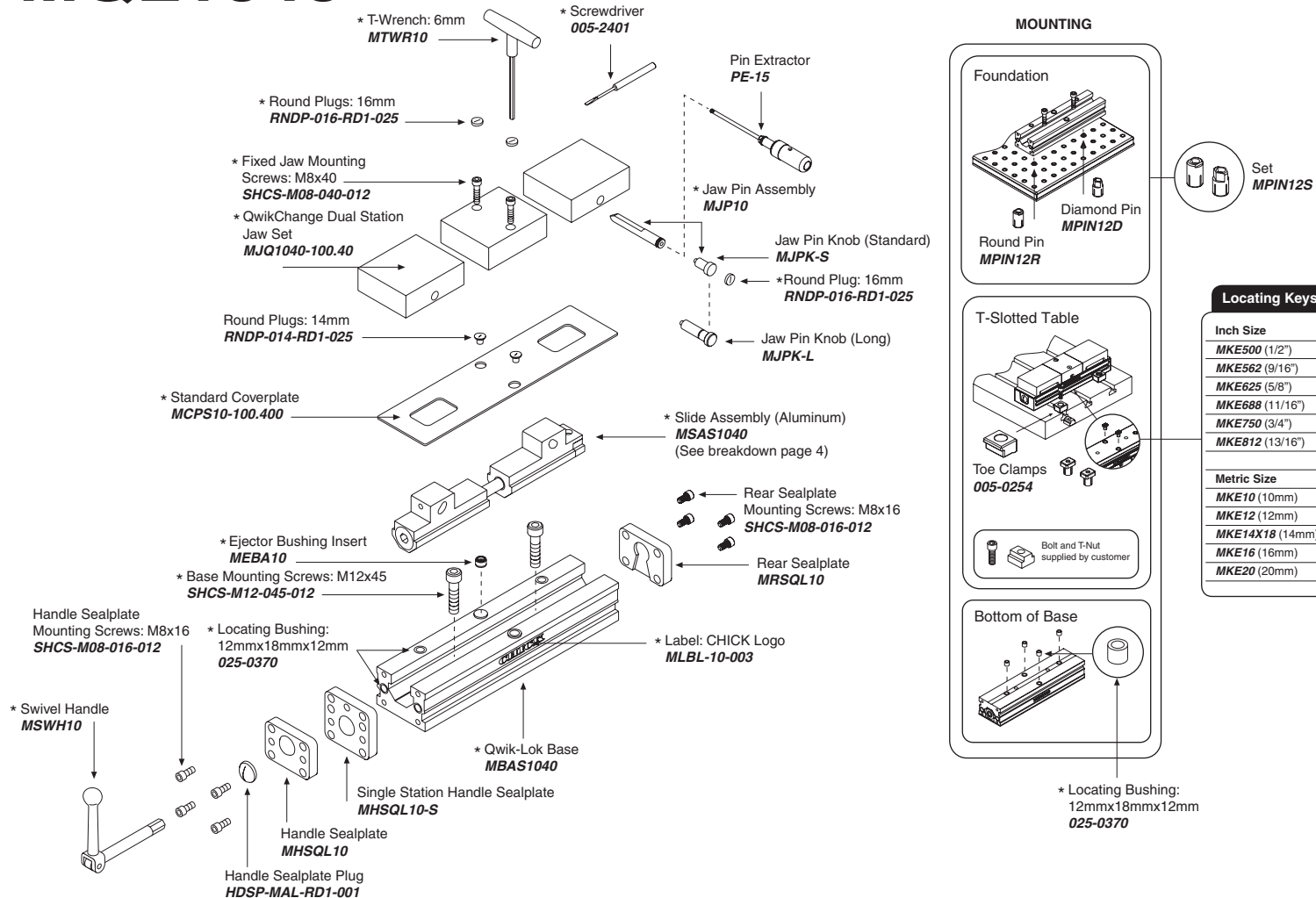
## 1040 Qwik-Lok Product Information



Notes

**CHICK WORKHOLDING SOLUTIONS, INC**  
500 Keystone Drive • Warrendale, PA 15086 USA  
Phone: (724) 772-1644 • Fax: (724) 772-1633  
Toll Free: (800) 33-CHICK • (800) 332-4425  
[www.ChickWorkholding.com](http://www.ChickWorkholding.com)

# M MQL1040



**Notes**

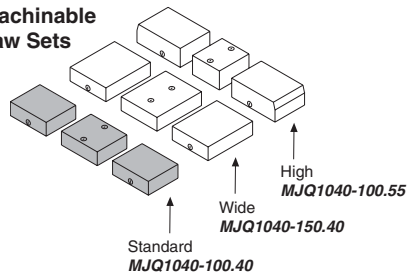
For QwikChange Jaw accessories, see pages 2-3

\* Included in a standard 1040 Qwik-Lok

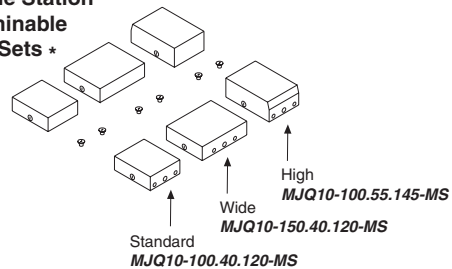
**CHICK WORKHOLDING SOLUTIONS, INC**  
 500 Keystone Drive • Warrendale, PA 15086 USA  
 Phone: (724) 772-1644 • Fax: (724) 772-1633  
 Toll Free: (800) 33-CHICK • (800) 332-4425  
 www.ChickWorkholding.com

# M MQL1040

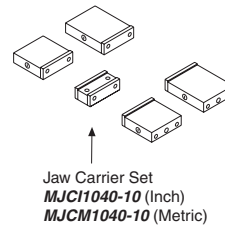
## Dual Station Machinable Jaw Sets



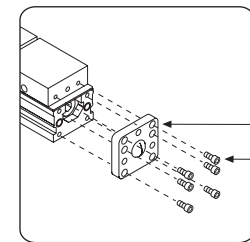
## Single Station Machinable Jaw Sets \*



## Jaw Carrier Set \*



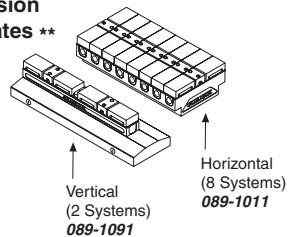
## Single Station Handle Sealplates



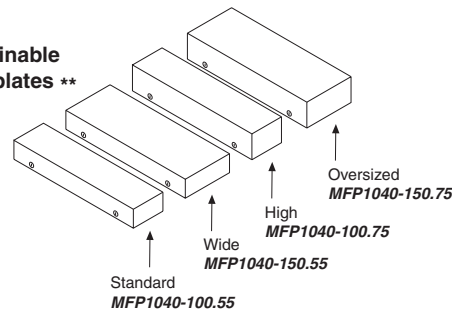
Sealplate  
**MHSQL10-S**

Mounting Screws:  
M8x16  
**SHCS-M08-016-012**

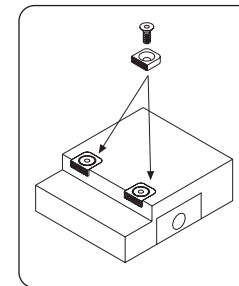
## Conversion Faceplates \*\*



## Machinable Faceplates \*\*



## Grippers



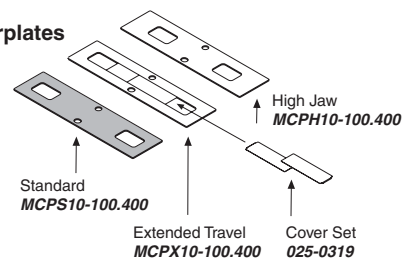
**Gripper #3**  
Plain **005-2531**  
Serrated **005-2532**  
(L-9mm x W-9mm x T-8mm)

**Gripper #4**  
Plain **005-2541**  
Serrated **005-2542**  
(L-12mm x W-12mm x T-4.6mm)

**Gripper #5**  
Plain **005-2551**  
Serrated **005-2552**  
(L-15mm x W-15mm x T-5mm)

**Gripper #6**  
Plain **005-2561**  
Serrated **005-2562**  
(L-19mm x W-19mm x T-6mm)

## Coverplates



### Notes

Grey item is included with a standard system

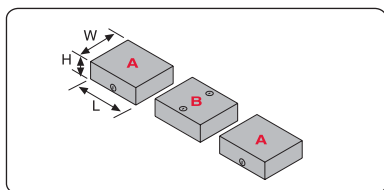
\*Single Station Machinable Jaw Sets require a Single Station Handle Sealplate. See above, right.

\*\*Faceplates and Conversion Faceplates require Round and Diamond Pins (**MPIN12S**). See page 3.

**CHICK WORKHOLDING SOLUTIONS, INC**  
500 Keystone Drive • Warrendale, PA 15086 USA  
Phone: (724) 772-1644 • Fax: (724) 772-1633  
Toll Free: (800) 33-CHICK • (800) 332-4425  
[www.ChickWorkholding.com](http://www.ChickWorkholding.com)

# M MQL1040

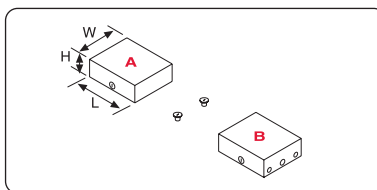
## QwikChange Machinable Dual Station Jaws



### Individual Dual Station Jaws

- Standard  
**A** Moveable Jaw ..... **MJQ10-100.40.120-M**  
 (W99mm, H40mm, L120mm)  
**B** Fixed Jaw ..... **MJQ10-100.40.120-F**  
 (W99mm, H40mm, L120mm)
- Wide  
**A** Moveable Jaw ..... **MJQ10-150.40.120-M**  
 (W148mm, H40mm, L120mm)  
**B** Fixed Jaw ..... **MJQ10-150.40.120-F**  
 (W148mm, H40mm, L120mm)
- High  
**A** Moveable Jaw ..... **MJQ10-100.55.145-M**  
 (W99mm, H55mm, L145mm)  
**B** Fixed Jaw ..... **MJQ10-100.55.90-F**  
 (W99mm, H55mm, L145mm)

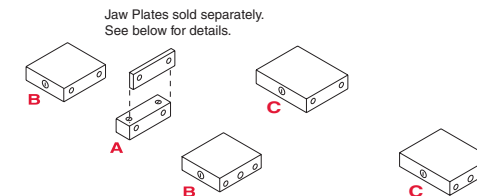
## QwikChange Machinable Single Station Jaws



### Individual Single Station Jaws

- Standard  
**A** Moveable Jaw ..... **MJQ10-100.40.120-M**  
 (W99mm, H40mm, L120mm)  
**B** Fixed Jaw ..... **MJQ10-100.40.120-S**  
 (W99mm, H40mm, L120mm)
- Wide  
**A** Moveable Jaw ..... **MJQ10-150.40.120-M**  
 (W148mm, H40mm, L120mm)  
**B** Fixed Jaw ..... **MJQ10-150.40.120-S**  
 (W148mm, H40mm, L120mm)
- High  
**A** Moveable Jaw ..... **MJQ10-100.55.145-M**  
 (W99mm, H55mm, L145mm)  
**B** Fixed Jaw ..... **MJQ10-100.55.145-S**  
 (W99mm, H55mm, L145mm)

## QwikChange Jaw Carriers

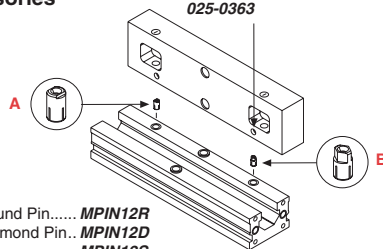


- Jaw Plates sold separately.  
See below for details.
- Jaw Carriers (Inch)  
**Set** **MJCI1040-10**  
**A** **MJCI1040-10F**  
**B** **MJCI1040-10MS**  
**C** **MJCI1040-10ML**
- Jaw Carriers (Metric)  
**Set** **MJCM1040-10**  
**A** **MJCM1040-10F**  
**B** **MJCM1040-10MS**  
**C** **MJCM1040-10ML**

- A** Fixed Jaw  
**B** Short Moveable Jaws (2 pieces)  
**C** Long Moveable Jaws (2 pieces)

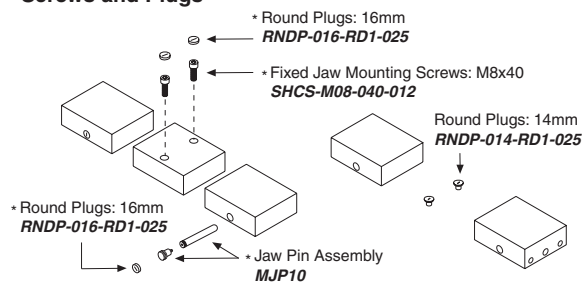
## Faceplate Mounting Accessories

Faceplate Locating Bushing:  
12mmx22mmx6mm  
**025-0363**



- A** Round Pin..... **MPIN12R**  
**B** Diamond Pin.. **MPIN12D**  
**A&B** Set..... **MPIN12S**

## Screws and Plugs



## Jaw Plates

### HARD JAW PLATES

- |   |  |  |
|---|--|--|
| Standard<br>(Set of 4)<br><b>JH4STD</b> (Inch)<br><b>MJH10</b> (Metric) |  | Standard Mounting Screws:<br>3/8-16x1/2"<br><b>LHCS-375-050-008</b> (Inch)<br><b>LHCS-M08-016-008</b> (Metric) |
| Thick<br>(Set of 2)<br><b>JH4THK</b>                                    |  | Thick Mounting Screws: 3/8-16x1"<br><b>SHCS-375-100-012</b>  |
| Both Sizes<br><b>JH4STD</b> &<br><b>JH4THK</b>                          |  | Both Sizes Mounting Screws: 3/8-16x1.25"<br><b>SHCS-375-125-008</b>  |

### SOFT JAW PLATES

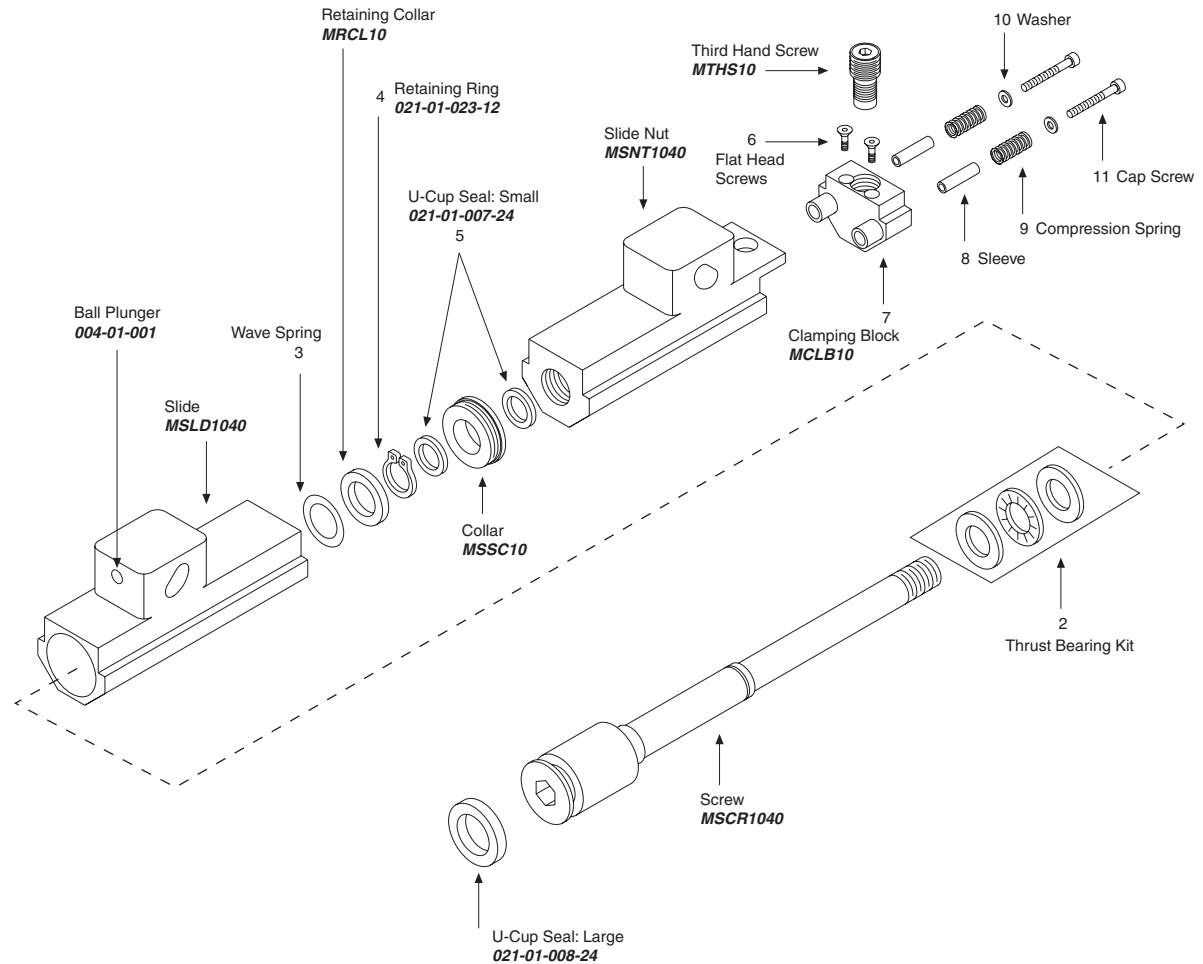
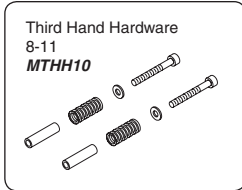
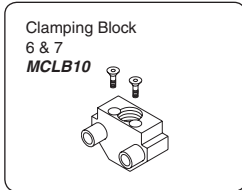
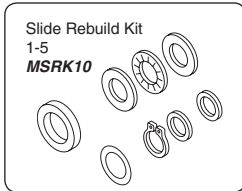
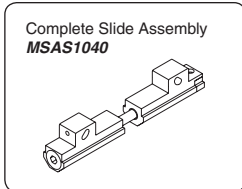
- |  |  |  |
|--|--|--|
| Standard<br>(Set of 4)<br><b>JS4AL</b> |  | Soft Mounting Screws: 3/8-16x1"<br><b>SHCS-375-100-012</b> |
|--|--|--|

## Notes

Grey item is included with a standard system

**CHICK WORKHOLDING SOLUTIONS, INC**  
 500 Keystone Drive • Warrendale, PA 15086 USA  
 Phone: (724) 772-1644 • Fax: (724) 772-1633  
 Toll Free: (800) 33-CHICK • (800) 332-4425  
[www.ChickWorkholding.com](http://www.ChickWorkholding.com)

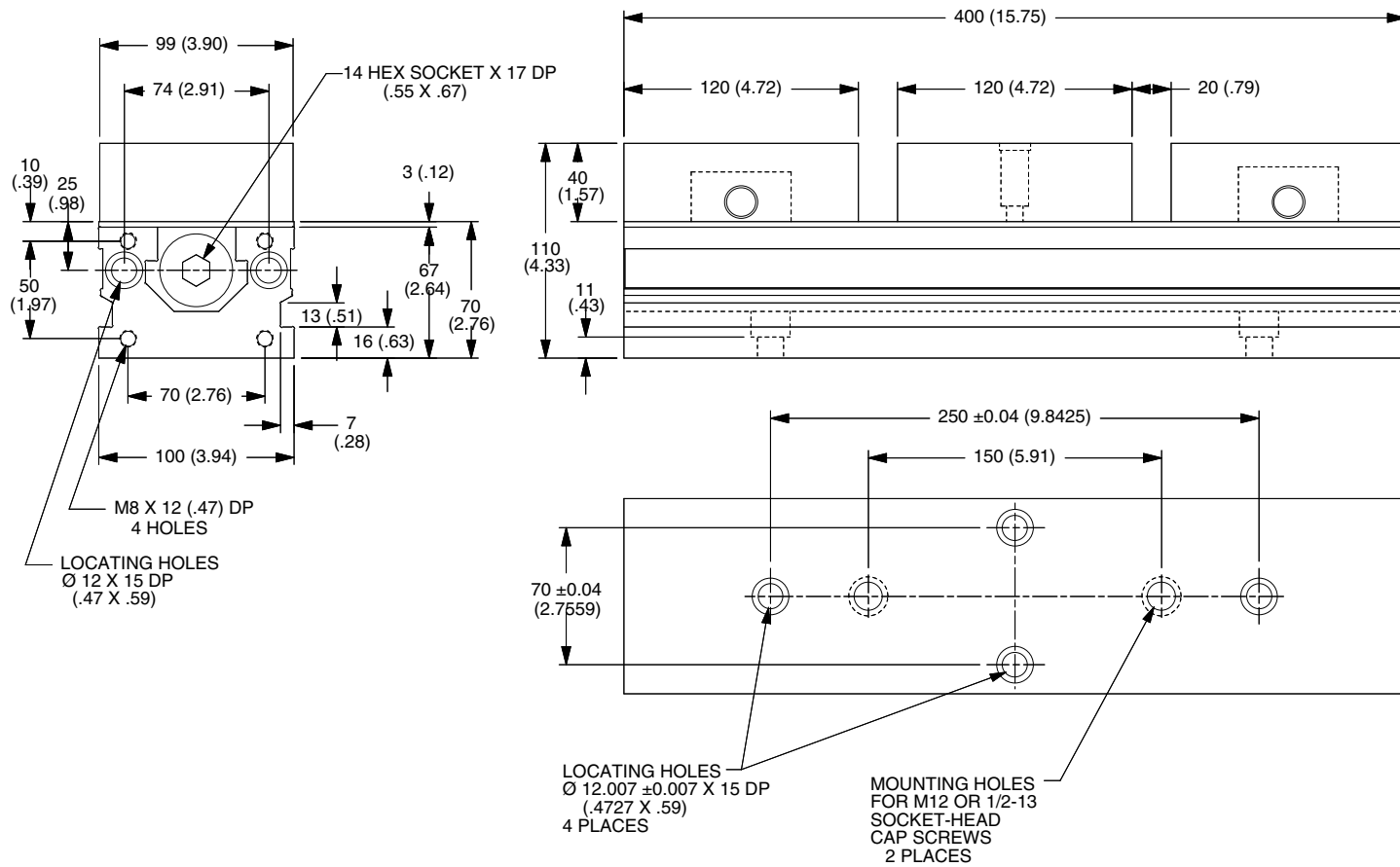
# M MQL1040



Notes

**CHICK WORKHOLDING SOLUTIONS, INC**  
 500 Keystone Drive • Warrendale, PA 15086 USA  
 Phone: (724) 772-1644 • Fax: (724) 772-1633  
 Toll Free: (800) 33-CHICK • (800) 332-4425  
[www.ChickWorkholding.com](http://www.ChickWorkholding.com)

# M MQL1040



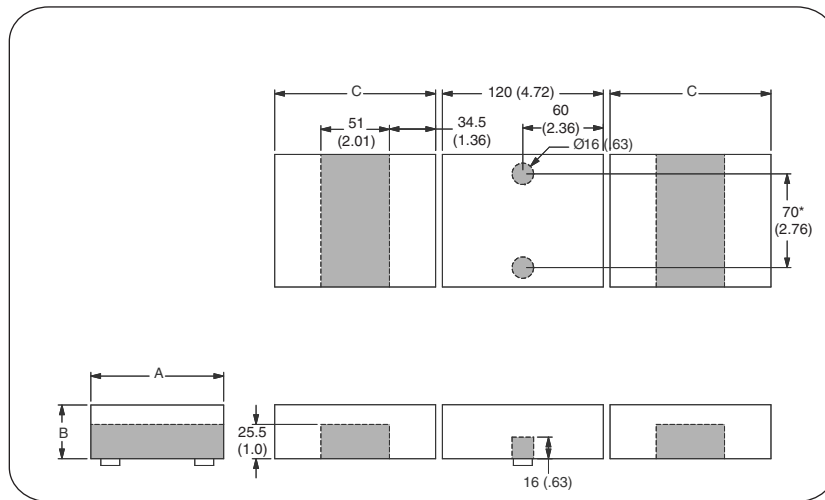
**Notes**

Dimensions are in mm (inches)  
 Dimensions include standard Dual Station Machinable Jaw Sets.

**CHICK WORKHOLDING SOLUTIONS, INC**  
 500 Keystone Drive • Warrendale, PA 15086 USA  
 Phone: (724) 772-1644 • Fax: (724) 772-1633  
 Toll Free: (800) 33-CHICK • (800) 332-4425  
[www.ChickWorkholding.com](http://www.ChickWorkholding.com)

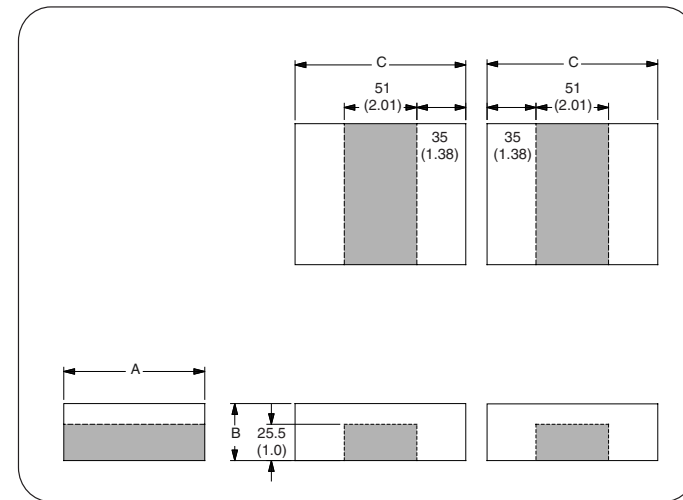
# M MQL1040

## Dual Station



Item Number	Description	A	B	C
<i>MJQ1040-100.40</i>	Standard	99 (3.90)	40 (1.57)	120 (4.72)
<i>MJQ1040-150.40</i>	Wide	148 (5.83)	40 (1.57)	120 (4.72)
<i>MJQ1040-100.55</i>	High	99 (3.90)	55 (2.17)	145 (5.71)

## Single Station



Item Number	Description	A	B	C
<i>MJQ10-100.40.120-MS</i>	Standard	99 (3.90)	40 (1.57)	120 (4.72)
<i>MJQ10-150.40.120-MS</i>	Wide	148 (5.83)	40 (1.57)	120 (4.72)
<i>MJQ10-100.55.145-MS</i>	High	99 (3.90)	55 (2.17)	145 (5.71)

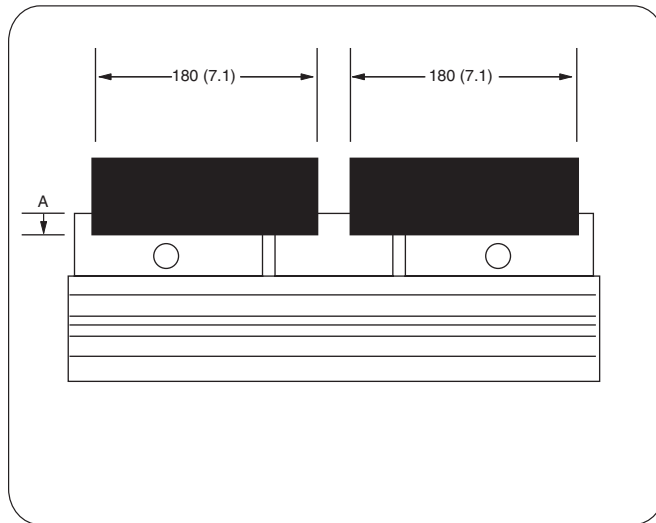
### Notes

Grey area indicates no cut zone  
 All dimensions are MM [IN]  
 Dimensions centered on the "A" dimension.

**CHICK WORKHOLDING SOLUTIONS, INC**  
 500 Keystone Drive • Warrendale, PA 15086 USA  
 Phone: (724) 772-1644 • Fax: (724) 772-1633  
 Toll Free: (800) 33-CHICK • (800) 332-4425  
[www.ChickWorkholding.com](http://www.ChickWorkholding.com)

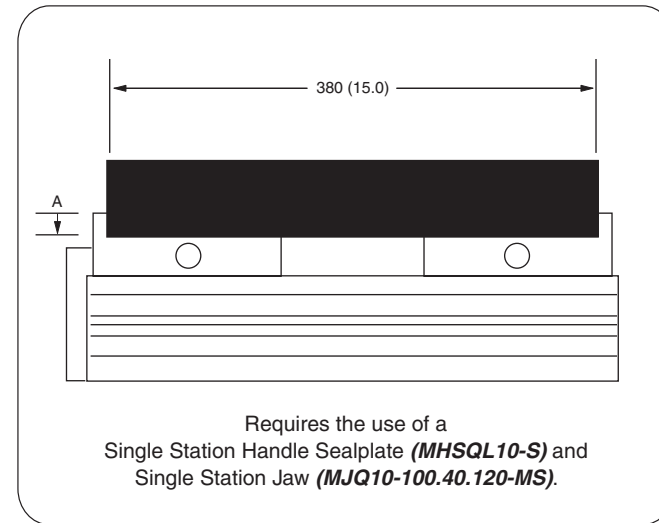
# M MQL1040

**Dual Station**



Item Number	Description	A	Jaw Width
<i>MJQ1040-100.40</i>	Standard	14.5 (.57)	99 (3.90)
<i>MJQ1040-150.40</i>	Wide	14.5 (.57)	148 (5.83)
<i>MJQ1040-100.55</i>	High	29.5 (1.16)	99 (3.90)

**Single Station**



Requires the use of a  
Single Station Handle Sealplate (*MHSQL10-S*) and  
Single Station Jaw (*MJQ10-100.40.120-MS*).

Item Number	Description	A	Jaw Width
<i>MJQ10-100.40.120-MS</i>	Standard	14.5 (.57)	99 (3.90)
<i>MJQ10-150.40.120-MS</i>	Wide	14.5 (.57)	148 (5.83)
<i>MJQ10-100.55.145-MS</i>	High	29.5 (1.16)	99 (3.90)

**Notes**

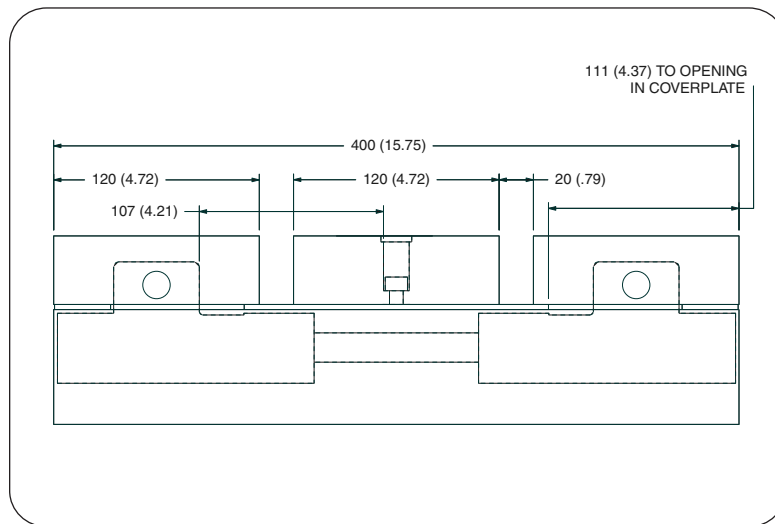
All dimensions are MM [IN]

**CHICK WORKHOLDING SOLUTIONS, INC**  
 500 Keystone Drive • Warrendale, PA 15086 USA  
 Phone: (724) 772-1644 • Fax: (724) 772-1633  
 Toll Free: (800) 33-CHICK • (800) 332-4425  
[www.ChickWorkholding.com](http://www.ChickWorkholding.com)

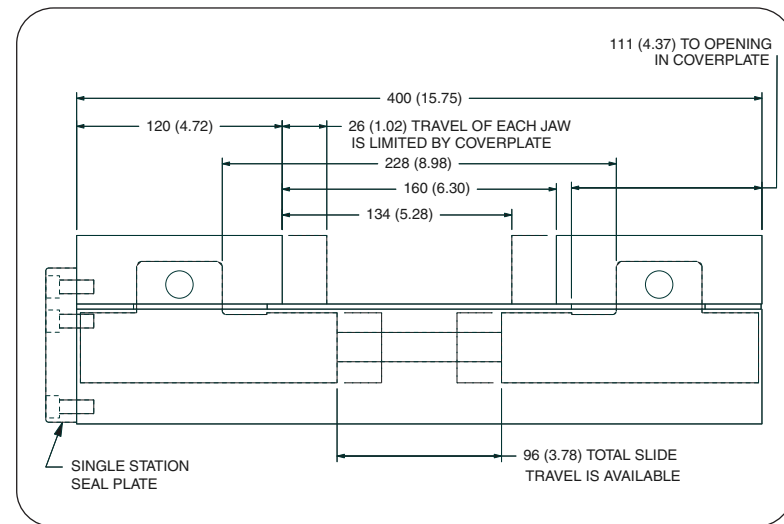


# M MQL1040

**Dual Station**



**Single Station**



**Notes**

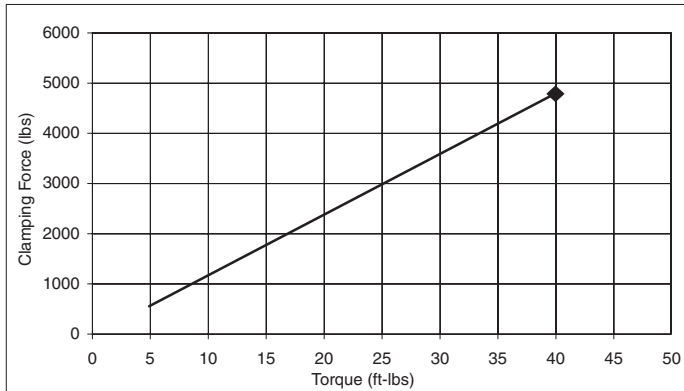
All dimensions are MM [IN]  
 DO NOT CLAMP PARTS AT EXTREME LIMITS OF JAW TRAVEL. PARTS SHOULD BE CLAMPED AT LEAST 1mm (.04 in) FROM THE LIMITS SHOWN.

**CHICK WORKHOLDING SOLUTIONS, INC**  
 500 Keystone Drive • Warrendale, PA 15086 USA  
 Phone: (724) 772-1644 • Fax: (724) 772-1633  
 Toll Free: (800) 33-CHICK • (800) 332-4425  
[www.ChickWorkholding.com](http://www.ChickWorkholding.com)

# M MQL1040

## Pounds (lbs)

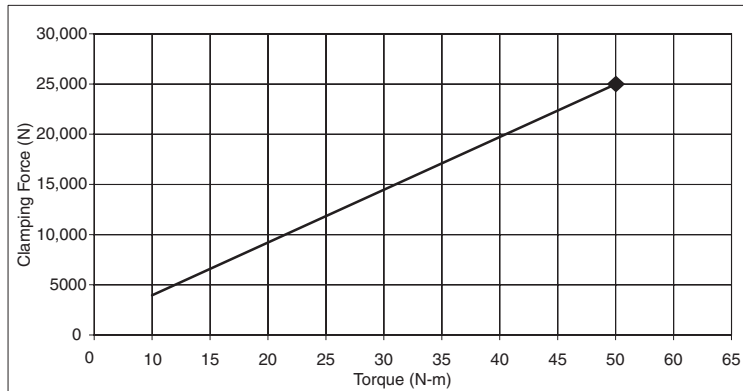
Torque (ft-lb)	Force (lbs)
5	600
15	1,800
25	3,000
35	4,200
◆ 40	4,800



Note: ◆ Maximum Recommended Torque. Actual results may vary.

## Newtons (N)

Torque (N-m)	Force (N)
10	4,000
20	8,000
30	12,000
40	16,200
◆ 50	20,000



Note: ◆ Maximum Recommended Torque. Actual results may vary.

Notes

**CHICK WORKHOLDING SOLUTIONS, INC**  
 500 Keystone Drive • Warrendale, PA 15086 USA  
 Phone: (724) 772-1644 • Fax: (724) 772-1633  
 Toll Free: (800) 33-CHICK • (800) 332-4425  
[www.ChickWorkholding.com](http://www.ChickWorkholding.com)