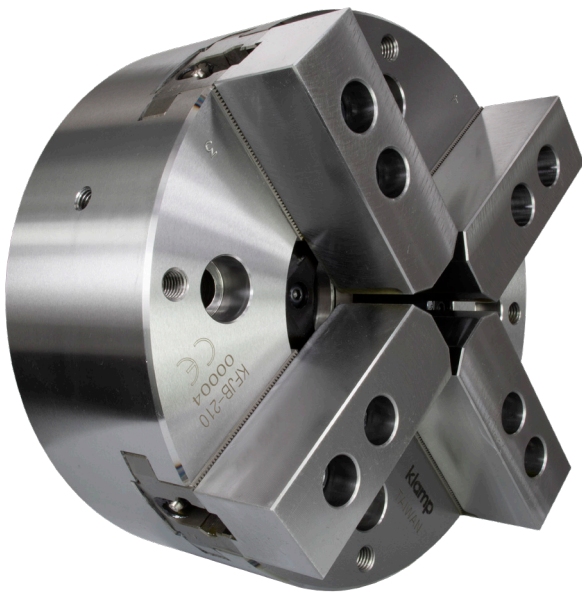


4 Jaw ultra large thru-hole high speed power chuck



Suitable for irregular work pieces

All four-jaws move at once in a single actuation to enable gripping of square, rectangular or irregular work pieces . All sliding control surfaces are hardened and ground for accuracy and long service life with good repeatability.

Effective lubrication

Each master base jaw has a grease nipple in it to allow direct greasing onto the chucks internal control surfaces. Ensure that the chuck is greased at least once per day or per shift.

Master Jaws have 1.5 x 60° Serrations

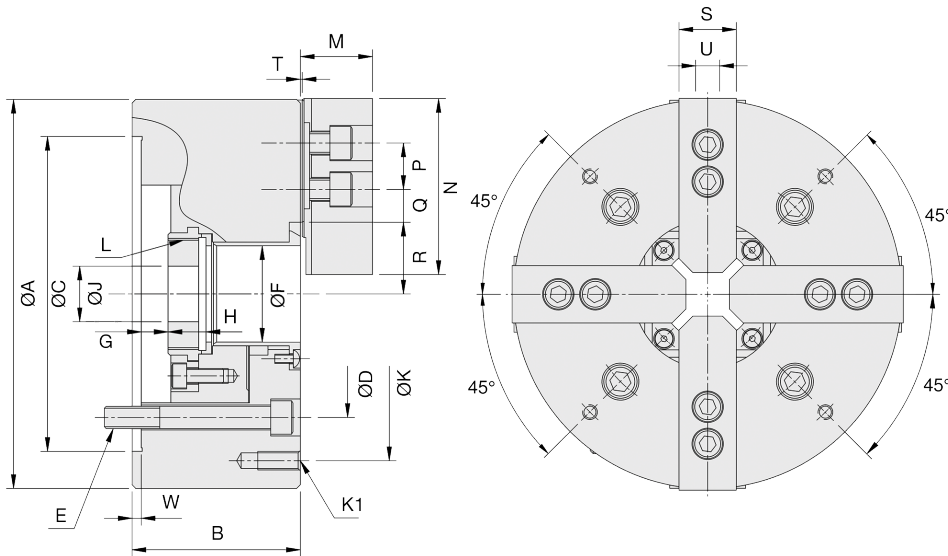
Please use high quality top jaws to ensure you get the most accuracy from your chuck, inaccurate top jaws without ground serrations will effect the chucks accuracy.

Through-hole

The chuck is supplied with an oversized through-hole to accomodate shaft shaped work pieces as well as plate shaped work pieces.

Problem Free Installation

This chuck will require an adaptor to be installed on your machine therefore simply specify which ASA or JIS Spindle nose your machine has and we will provide the correct adaptor to suit.



Specifications

Part No.	Thru hole mm	Jaw Stroke (Diameter) mm	Plunger Stroke mm	Gripping Dia. (External) mm		Max. Draw Bar Pull Force kN (kgf)	Max. Gripping Force kN (kgf)	Max. Speed min ⁻¹	Net Weight with Soft Top Jaws kg	Matching Cylinder
				Max.	Min.					
KFJB-206	52	5.5	12	170	22	16.5 (1700)	42.5 (4400)	4500	14.0	SR1453
KFJB-208	66	7.4	16	215	50	24.5 (2500)	63 (6450)	3600	24.2	SR1666
KFJB-210	81	8.8	19	254	32	31 (3200)	80 (8200)	3200	35.4	SR1781

Dimensions

Part No.	A	B	C (H6)	D	E	F	G Max.	G Min.	H	J	K	K1	L Max.	M	N	P	Q Max.	Q Min.	R Max.	R Min.	S	U	T	W
KFJB-206	170	81	140	104.8	4-M10	52	7	-5	23	20	145 PCD	4-M10	M60x2.0	37.5	73	20	21.1	9.1	36.35	33.6	31	12	2	5
KFJB-208	215	91	170	133.4	4-M12	66	10	-6	25	30	180 PCD	4-M10	M75x2.0	39.5	80	25	26.6	11.6	46.6	42.9	35	14	2	5
KFJB-210	254	100	220	171.4	4-M16	81	8.5	-10.5	25	40	225 PCD	4-M12	M90x2.0	43	110	30	33.1	13.6	54.6	50.1	40	16	2	5