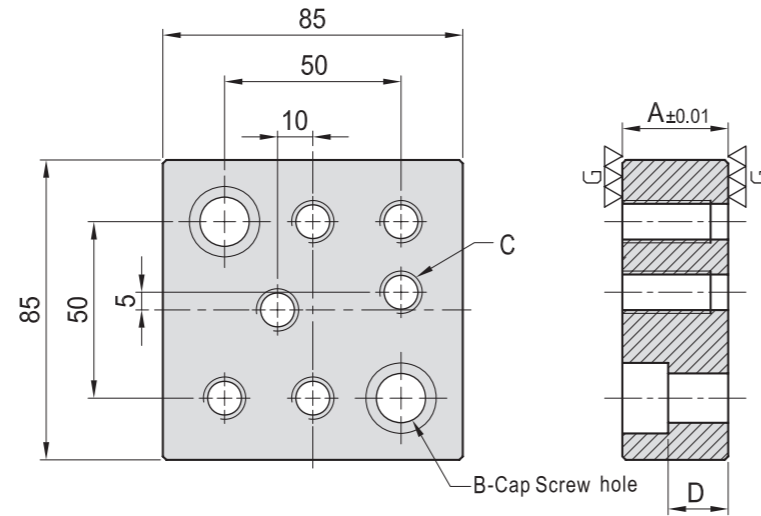


# SU05

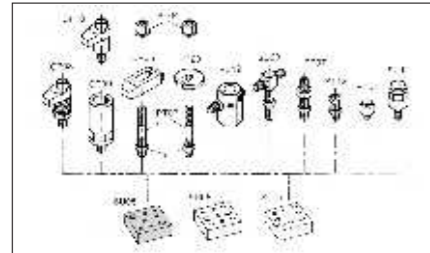
## SQUARE ADAPTER



- Material / Finish :  
Material : S45C, (JIS) / CK45 (DIN)
- Heat treated : HRC 40°.
- Surface finish : Black Oxide.
- Application : Multipurpose adapter for a variety of stops & clamps.



MODEL NO.	A	B	C	D	kg
SU05-1230	30	M12	M12	17	1.50
SU05-1240	40			27	2.00
SU05-1250	50			37	2.25
SU05-1630	30	M16	M16	12	1.30
SU05-1640	40			22	1.80
SU05-1650	50			32	2.22

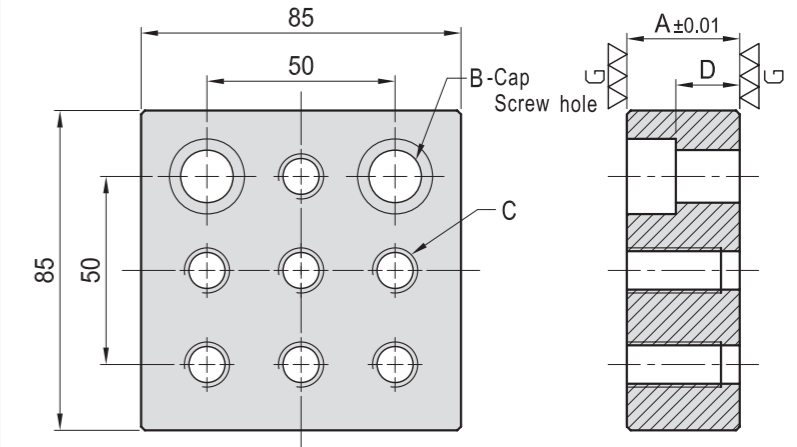


# SU07

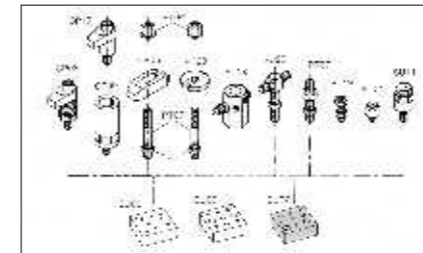
## SQUARE ADAPTER



- Material / Finish :  
Material : S45C(JIS) / CK45(DIN)
- Heat treated : HRC 40°.
- Surface finish : Black Oxide.
- Application : Multipurpose adapter for a variety of stops & clamps.



MODEL NO.	A	B	C	D	kg
SU07-1230	30	M12	M12	17	1.5
SU07-1240	40			27	2.0
SU07-1250	50			37	2.6
SU07-1630	30	M16	M16	12	1.3
SU07-1640	40			22	1.8
SU07-1650	50			32	2.2

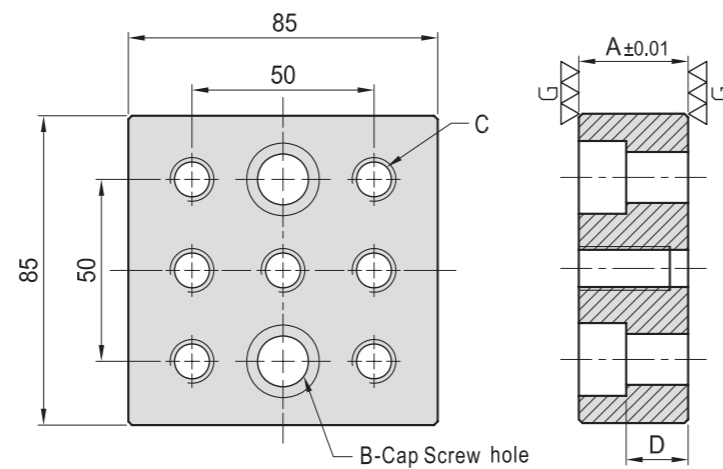


# SU06

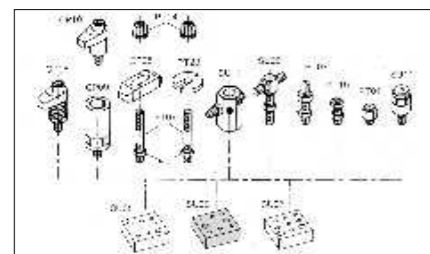
## SQUARE ADAPTER



- Material / Finish :  
Material : S45C(JIS) / CK45(DIN)
- Heat treated : HRC 40°.
- Surface finish : Black Oxide.
- Application : Multipurpose adapter for a variety of stops & clamps.



MODEL NO.	A	B	C	D	kg
SU06-1230	30	M12	M12	17	1.50
SU06-1240	40			27	2.00
SU06-1250	50			37	2.60
SU06-1630	30	M16	M16	12	1.30
SU06-1640	40			22	1.80
SU06-1650	50			32	2.25

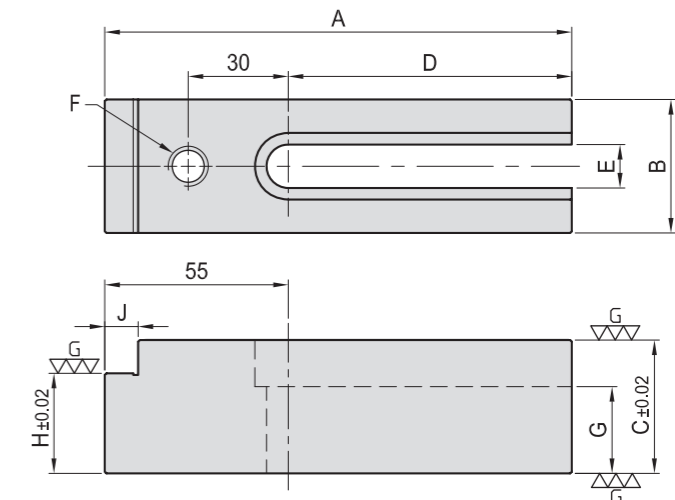


# SU08

## EXTENSION SUPPORT



- Material / Finish :  
Material : S45C(JIS) / CK45(DIN)
- Heat treated : HRC 40°.
- Surface finish : Black Oxide.
- Application : Gives extra flexibility in the placement of stops.



MODEL NO.	A	B	C	D	E	F	G	H	J	kg
SU08-12140-30	140	40	40	85	13	M12	26	30	10	1.3
SU08-12140-40			50				36			1.6
SU08-16140-30	140	50	40	85	17	M16	22	30	10	1.5
SU08-16140-40			50				32			1.9

