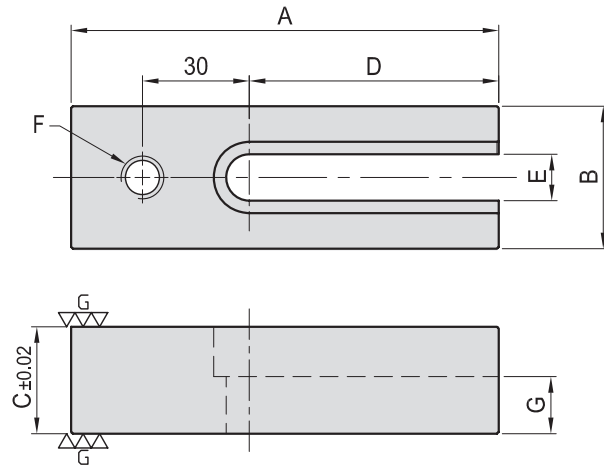


SU09

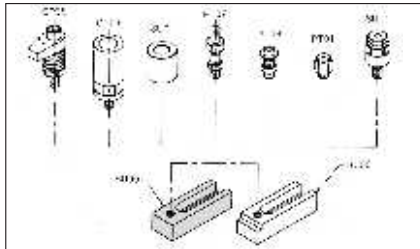
EXTENSION SUPPORT



- Material / Finish :
Material : S45C(JIS) / CK45(DIN)
- Heat treated : HRC 40°.
- Surface finish : Black Oxide.
- Application : Multipurpose adapter for a variety of stops & clamps.



MODEL NO.	A	B	C	D	E	F	G	kg
SU09-12120-30	120	40	30	70	13	M12	16	0.85
SU09-12120-40			40				26	1.10
SU09-16140-30	140	50	30	90	17	M16	12	1.14
SU09-16140-40			40				22	1.52

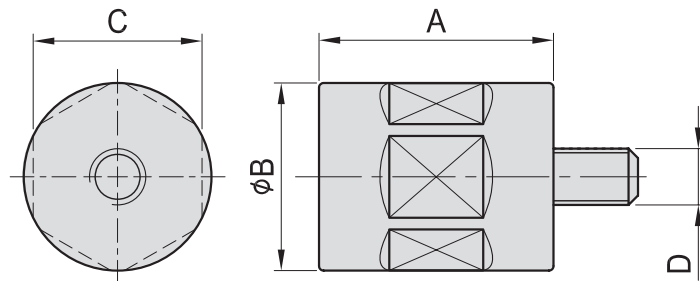


SU10

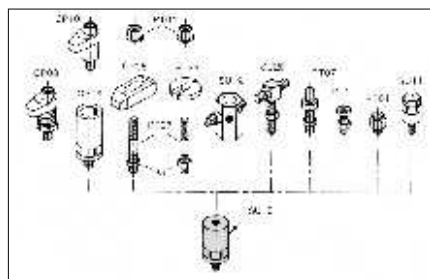
RISER CYLINDER



- Material / Finish :
Material : S45C(JIS) / CK45(DIN)
- Heat treated : HRC 38°.
- Surface finish : Black Oxide.
- Application : Elevate a work stop or clamp.



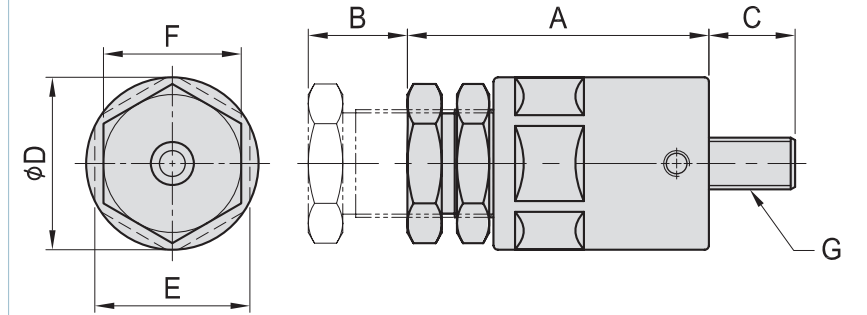
MODEL NO.	A	B	C	D	kg
SU10-1250	50	40	36	M12	0.45
SU10-1265	65		0.59		
SU10-1280	80		0.74		
SU10-1650	50	50	46	M16	0.72
SU10-1665	65				0.84
SU10-1680	80				1.20



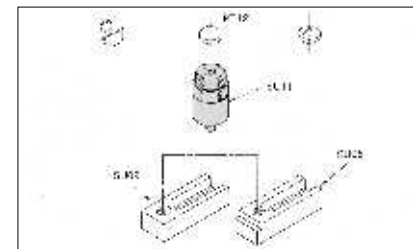
- Material / Finish :
Material : S45C(JIS) / CK45(DIN)
- Heat treated : HRC 38°~40°.
- Surface finish : Black Oxide.
- Application : Multipurpose support part.

SU11

SUPPORT JACK



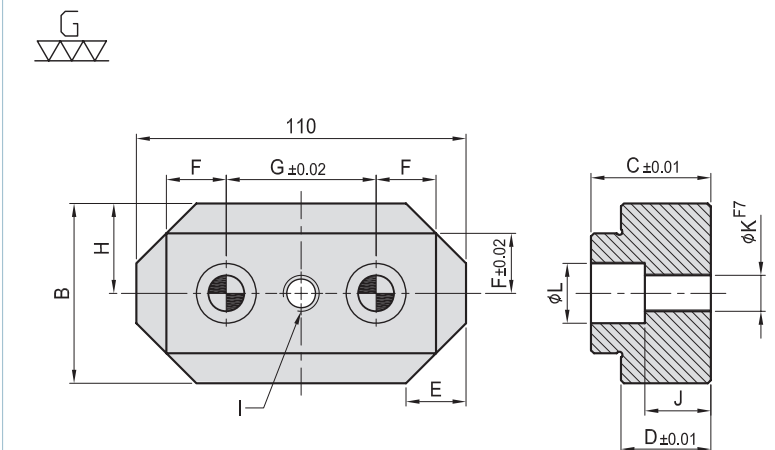
MODEL NO.	A	B	C	D	E	F	G	kg
SU11-1265	65	20	20	40	36	32	M12	0.54
SU11-1665	65	20	20	50	46	36	M16	0.82



- Material / Finish :
Material : S45C(JIS) / CK45(DIN)
- Heat treated : HRC 45°.
- Application : Work piece support & positioning.

SU12

POSITIONING EDGE SUPPORT



MODEL NO.	A	B	C	D	E	F	G	H	I	J	K	L	M	kg
SU12-1230	110	60	40	30	20	20	50	30	M12	22	12	20		1.50
SU12-1240			50	40						32				1.92
SU12-1630	110	60	40	30	20	20	50	30	M16	17	16	26		1.40
SU12-1640			50	40						26				1.80

