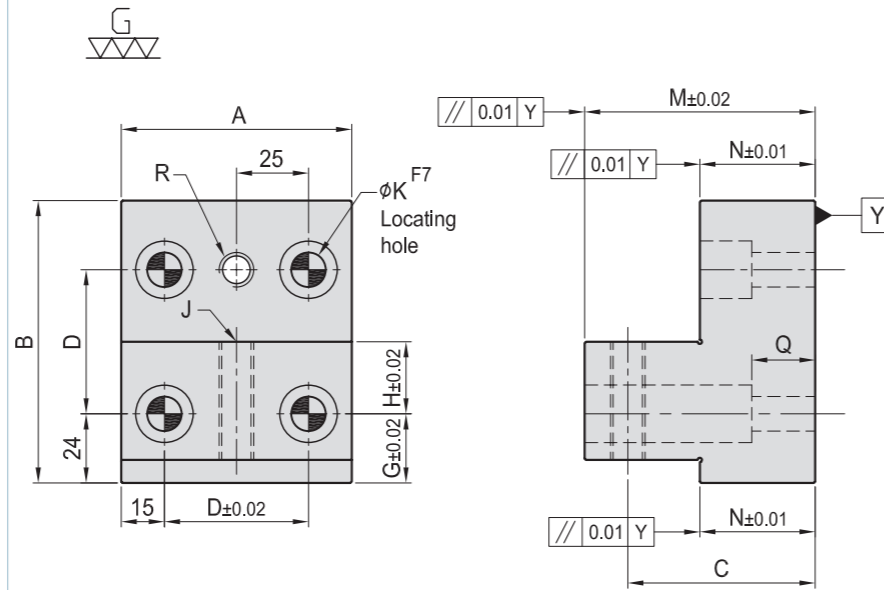
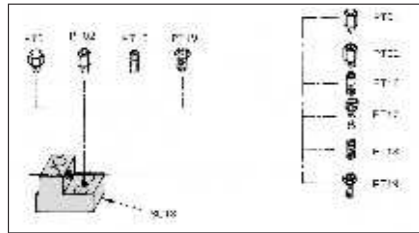


# SU13

## POSITIONING EDGE SUPPORT



- Material / Finish :  
Material : S45C(JIS) / CK45(DIN)
- Heat treated : HRC 45°.
- Application : Multipurpose adapter for a variety of stops & clamps.



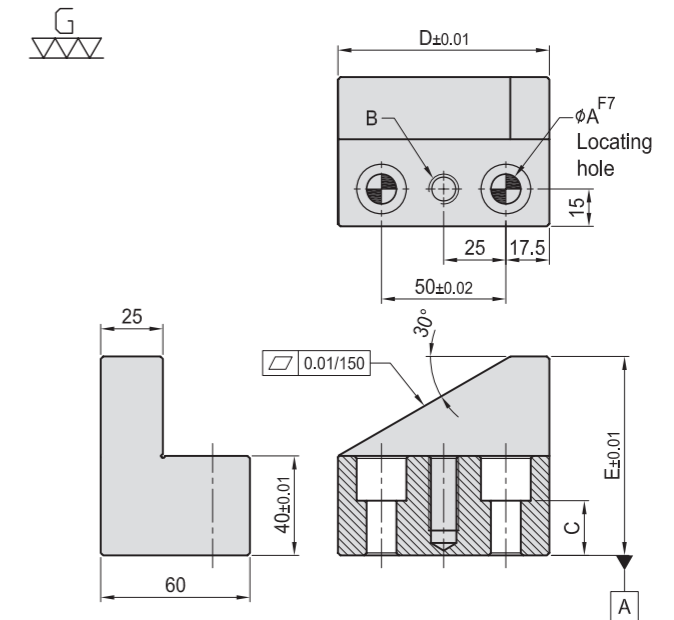
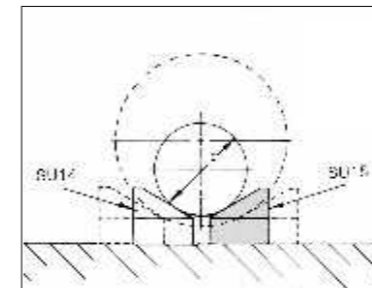
MODEL NO.	A	B	C	D	G	H	J	K	M	N	Q	R	kg
SU13-1240	80	98	65	50	16	25	M12	12	80	40	22	M12	3.00
SU13-1640	80	98	65	50	16	25	M16	16	80	40	16	M16	2.64

# SU15

## SPLIT V BLOCK



- Material / Finish :  
Material : S45C(JIS) / CK45(DIN)
- Heat treated : HRC 45°.
- Application : Use with SU14 to create an adjustable V block set.



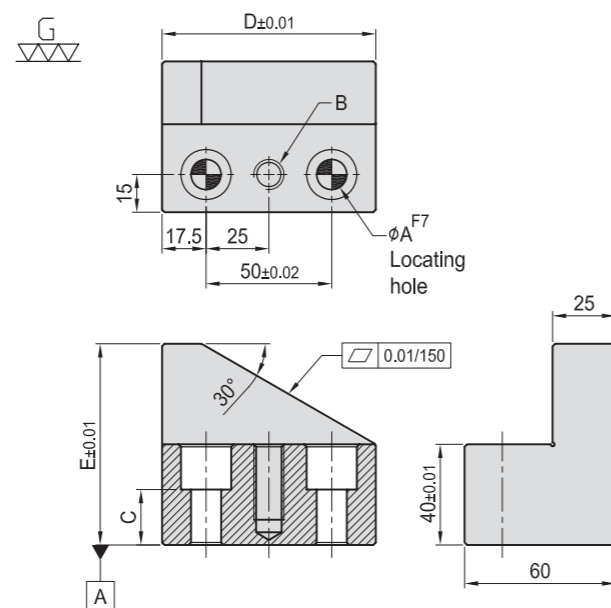
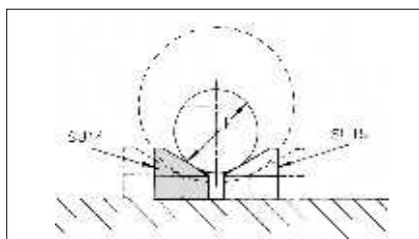
MODEL NO.	A	B	C	D	E	F		kg
						Max.	Min.	
SU15-1250-600	12	M12	22	85	80	600	50	1.86
SU15-1650-600	16	M16	16	85	80	600	50	1.74

# SU14

## SPLIT V BLOCK



- Material / Finish :  
Material : S45C(JIS) / CK45(DIN)
- Heat treated : HRC 45°.
- Application : Use with SU15 to create an adjustable V block set.



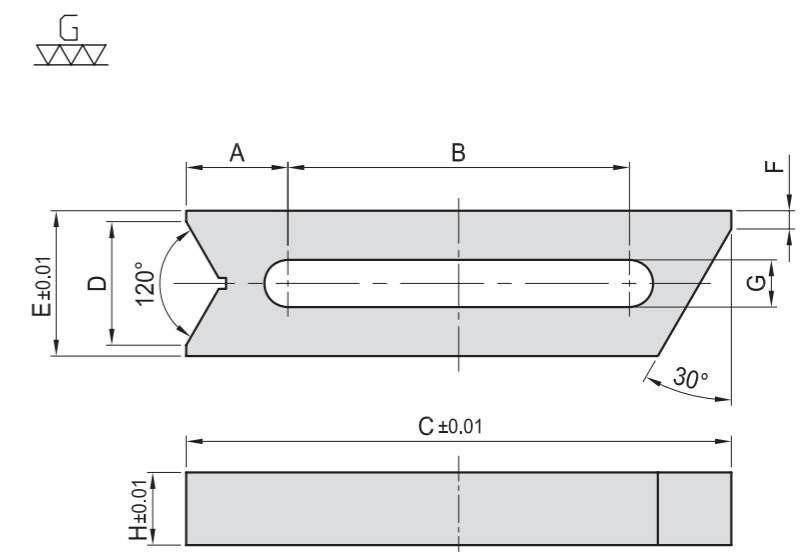
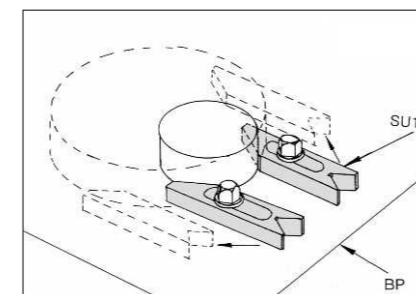
MODEL NO.	A	B	C	D	E	F		kg
						Max.	Min.	
SU14-1250-600	12	M12	22	85	80	600	50	1.86
SU14-1650-600	16	M16	16	85	80	600	50	1.76

# SU16

## V BLOCK



- Material / Finish :  
Material : S45C(JIS) / CK45(DIN)
- Heat treated : HRC 45°.
- Application : Multipurpose V-block, use independently or in pairs.



MODEL NO.	A	B	C	D	E	F	G	H	kg
SU16-12150	28	94	150	34	40	5	13	20	0.65
SU16-16175	30	115	175	40	50	5	17	20	0.90