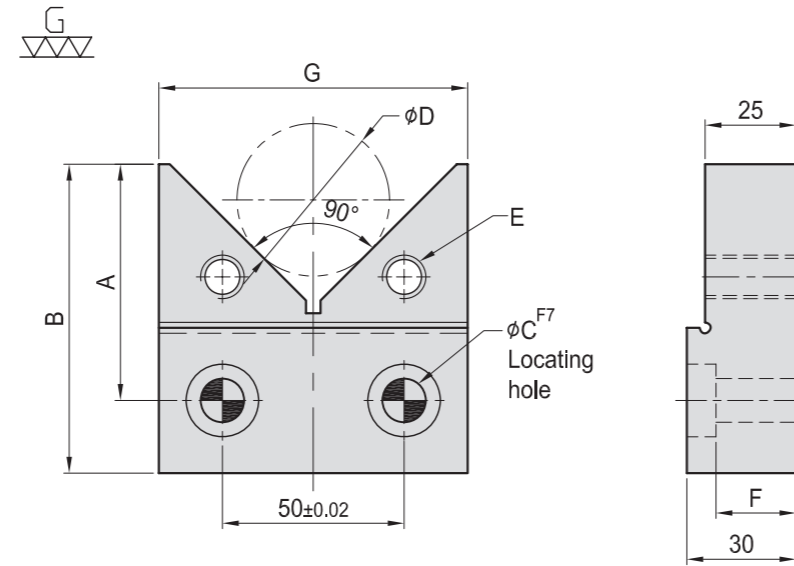
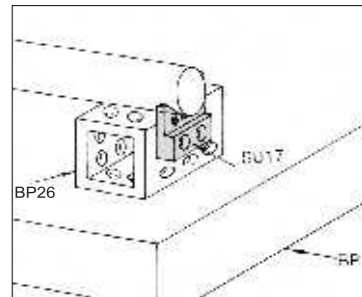


SU17

V BLOCK



- Material / Finish : Material : S45C(JIS) / CK45(DIN)
- Heat treated : HRC 45°.
- Application : Easily mounts to any fixture to support round parts.



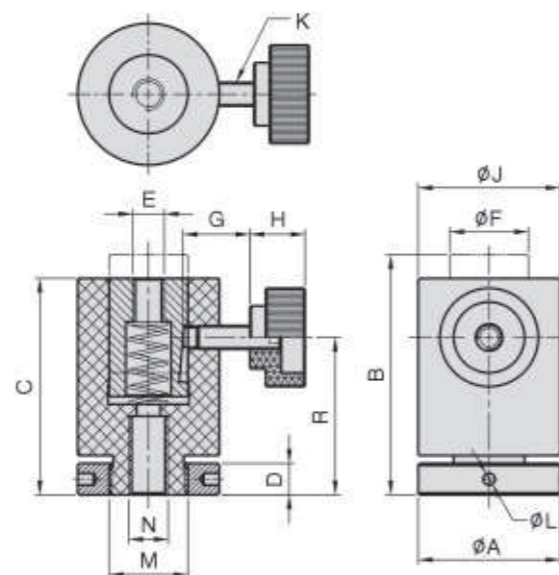
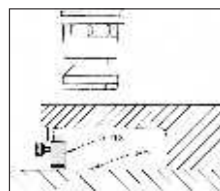
MODEL NO.	A	B	C	D		E	F	G	kg
				Max.	Min.				
SU17-1215-080	65	85	12	80	15	M12	22	85	1.10
SU17-1215-100	75	95		100					1.30
SU17-1615-080	65	85	16	80	15	M16	25	85	1.02
SU17-1615-100	75	95		100					1.20

SU18

SUPPORT JACK



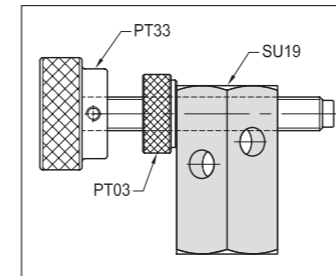
- Material / Finish : Material : S45C(JIS) / CK45(DIN)
 - Heat treated : HRC 38°~42°.
 - Surface finish : Black Oxide.
 - Application : Designed to support over hanging workpiece, spring loaded & adjustable.
 - Features : supporting height can be adjusted by loosening the adjusting screw.
- Shock resistance during machining operation.



MODEL NO	A	B	C	D	E	F	G	H	J	K	L	M	N	R	kg
SU18-3655	36	61	55	8	M 8	20	17	14	36	M 6	3	M20	M10	40	0.43
SU18-4270	42	79	70	9	M10	25	25	17	42	M 8	4	M24	M12	50	0.73
SU18-5085	50	100	87	10	M12	30	27	20	50	M10	5	M30	M16	62	1.30

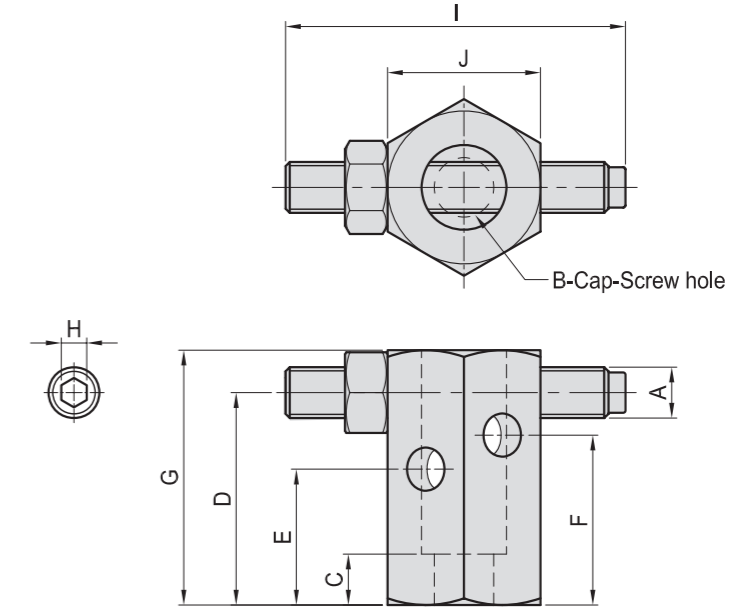


- Material / Finish : Material : S45C(JIS) / CK45(DIN)
- Heat treated : HRC 32°~38°.
- Surface finish : Black Oxide.
- Application : Multipurpose work piece positioning.



SU19

ADJUSTABLE STOP



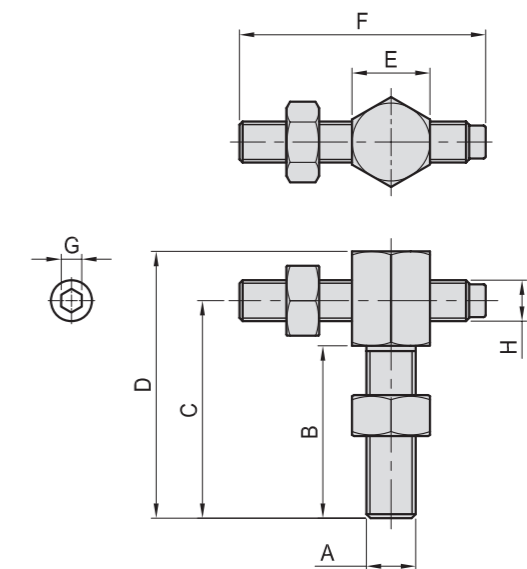
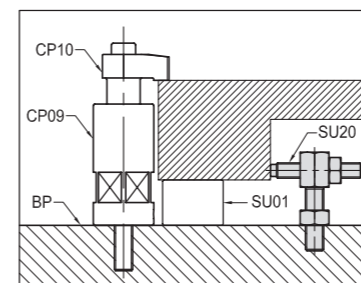
MODEL NO.	A	B	C	D	E	F	G	H	I	J	kg
SU19-1280	M12	M12	12	32	40	50	60	6	80	36	0.43
SU19-1690	M16	M16	14	40	50	63	80	8	90	46	0.89

SU20

MINI ADJUSTABLE STOP



- Material / Finish : Material : S45C (JIS) / CK45(DIN)
- Heat treated : HRC 32°~38°.
- Surface finish : Black Oxide.
- Application : Multipurpose work piece positioning.



MODEL NO.	A	B	C	D	E	F	G	H	kg
SU20-1260	M12	42	53	65	19	60	5	M10	0.13
SU20-1680	M16	45	58	70	24	80	6	M12	0.24