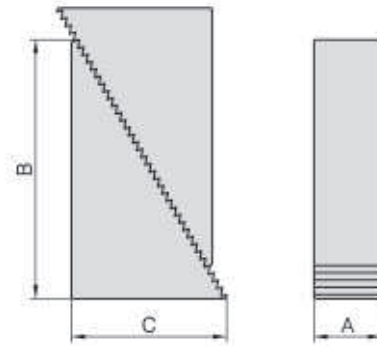


SU25

STEP BLOCK

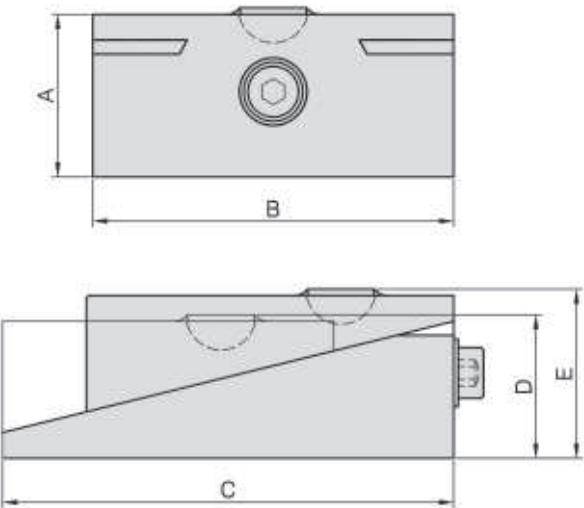


- Material / Finish :
Material : S45C.
- Heat treated : HRC32°~36°.
- Surface finish : Black Oxide.
- Application : Multipurpose clamping accessory, use with CP25.

MODEL NO.	Supporting Height	A	B	C	kg
SU25-25030	19-49	25	29.0	17	0.05
SU25-25045	28-68		45.0	27	0.12
SU25-25097	58-150		97.5	57	0.50
SU25-32059	38-90	32	59.0	35	0.24
SU25-32097	58-150		97.5	57	0.62
SU25-32139	82-210		139.0	81	1.32
SU25-38059	36-90	38	59.0	35	0.29
SU25-38097	58-150		97.5	57	0.73
SU25-38139	82-210		139.0	81	1.60
SU25-50059	36-90	50	59.0	35	0.70
SU25-50097	58-150		97.5	57	1.66
SU25-50139	82-210		139.0	81	3.43

SU27

ADJUSTABLE PARALLEL BLOCK

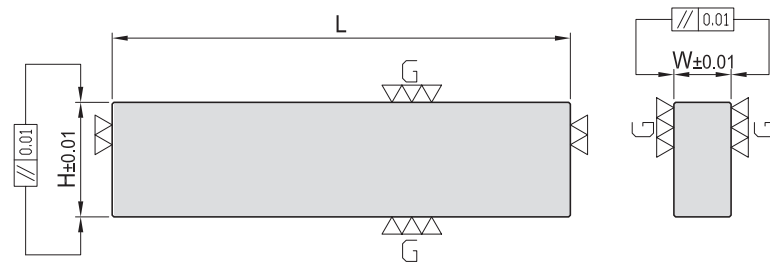


- Material / Finish :
Material : S45C(JIS) / CK45(DIN)
- Heat treated : HRC 38°~42°.
- Surface finish : Black Oxide.
- Application : Adjustable work piece support, fine adjustment capability.

MODEL NO.	A	B	C	D	E	kg
SU27-5039-46	39	50	82	35	41	1.2
SU27-8052-59	53	80	125	49	55	3.4

SU26

HARDENED GROUND PARALLEL

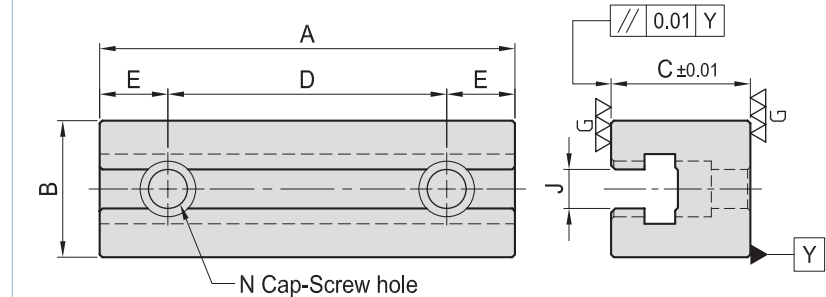


- Material : S45C
- Heat treated : HRC 45°.

MODEL NO.	W	H	L	kg	MODEL NO.	W	H	L	kg
SU26-0812-100	8	12	100	0.18	SU26-2025-200	20	25	200	1.60
SU26-0815-100		15		0.19	SU26-2030-200		30		1.92
SU26-1015-100	15	0.24	SU26-2040-200	40	2.54				
SU26-1020-100	10	20	100	0.32	SU26-2530-250	25	30	250	3.00
SU26-1025-100		25		0.22	SU26-2540-250		40		3.95
SU26-1215-100	15	0.28	SU26-2550-250	50	4.90				
SU26-1220-100	12	20	100	0.19	SU26-2840-300	28	40	300	5.80
SU26-1225-100		25		0.26	SU26-2850-300		50		6.66
SU26-1620-150	20	0.38	SU26-3850-300	50	9.00				
SU26-1625-150	16	25	150	0.48	SU26-3875-300	38	75	300	13.80
SU26-1630-150		30		1.14					

SU28

T SLOT PARALLEL BLOCK



- Material / Finish :
Material : SCM420
- Heat treated : HRC 60°.
- Surface finish : Black Oxide.

MODEL NO.	A	B	C	D	E	N	J	kg
SU28-5050150-12	149	49	50	100	24.5	M12	14	1.4
SU28-5050200-12	199			150			2.3	
SU28-6060150-16	149	59	60	100	24.5	M16	18	2.3
SU28-6060200-16	199			150			3.5	