

SINCO® CLAMPING GRIP GUIDE

Explore all SINCO® clamping
equipment in one place

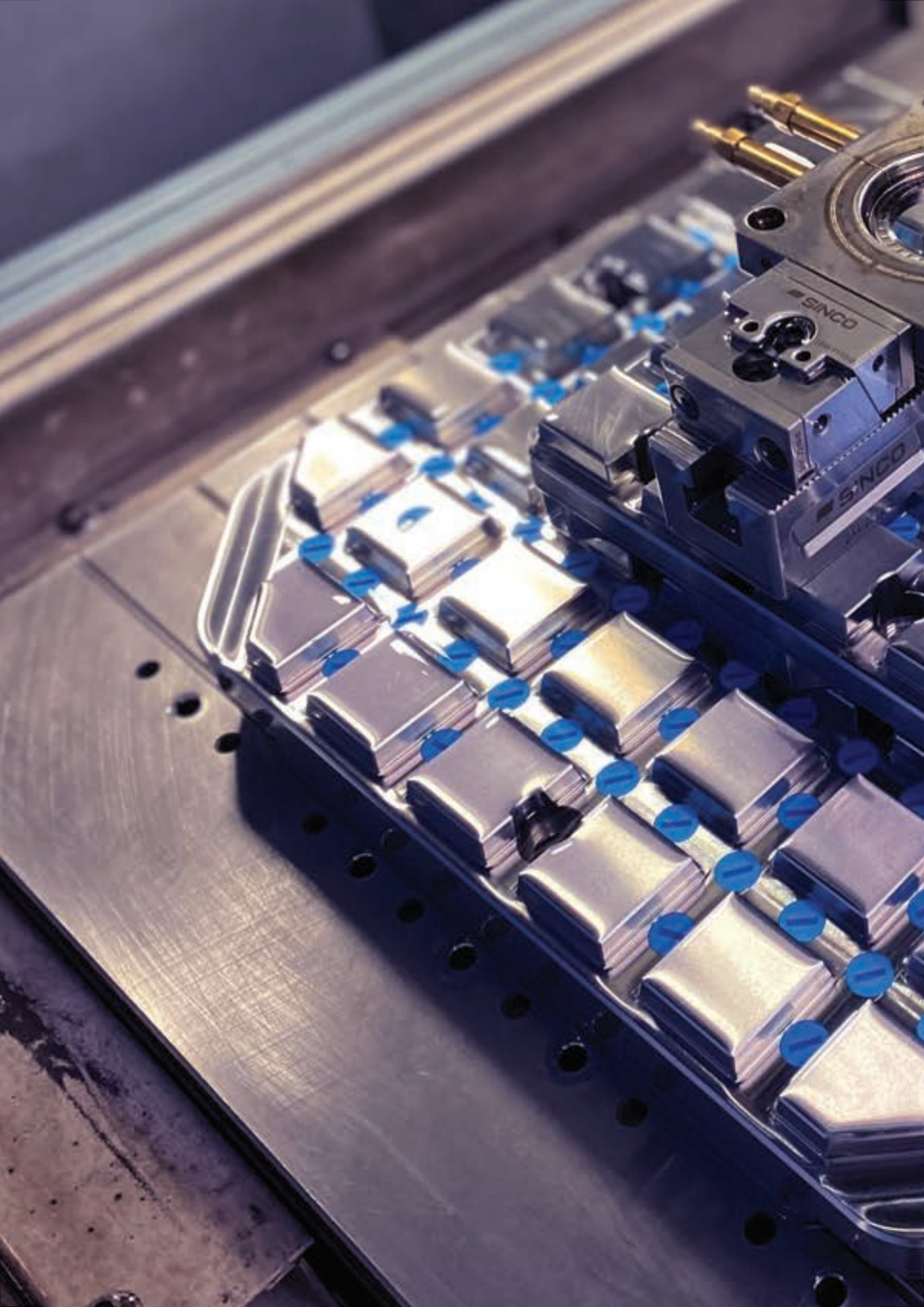


Grip Guide

 **SINCO®**
SPANNTÉCHNIK

Table of content

5XGrip Centering Vise	6-7
MultiZero® Cylindrical Support	8-9
MultiZero® Clamp Support	10-11
MultiZero® Support W50	12-14
MultiZero® Holder W50	15-16
MultiZero® Stoper Rail	17-19
MultiZero® Slot Rail	20-21
MultiZero® Centaring Pins	22-23
MultiZero® Clamps	24-26
MultiZero® Vise Single Wedge	27-28
MultiZero® Vise Double Wedge	29-30
MultiZero® Rail	31-32



5XGrip Centering Vise

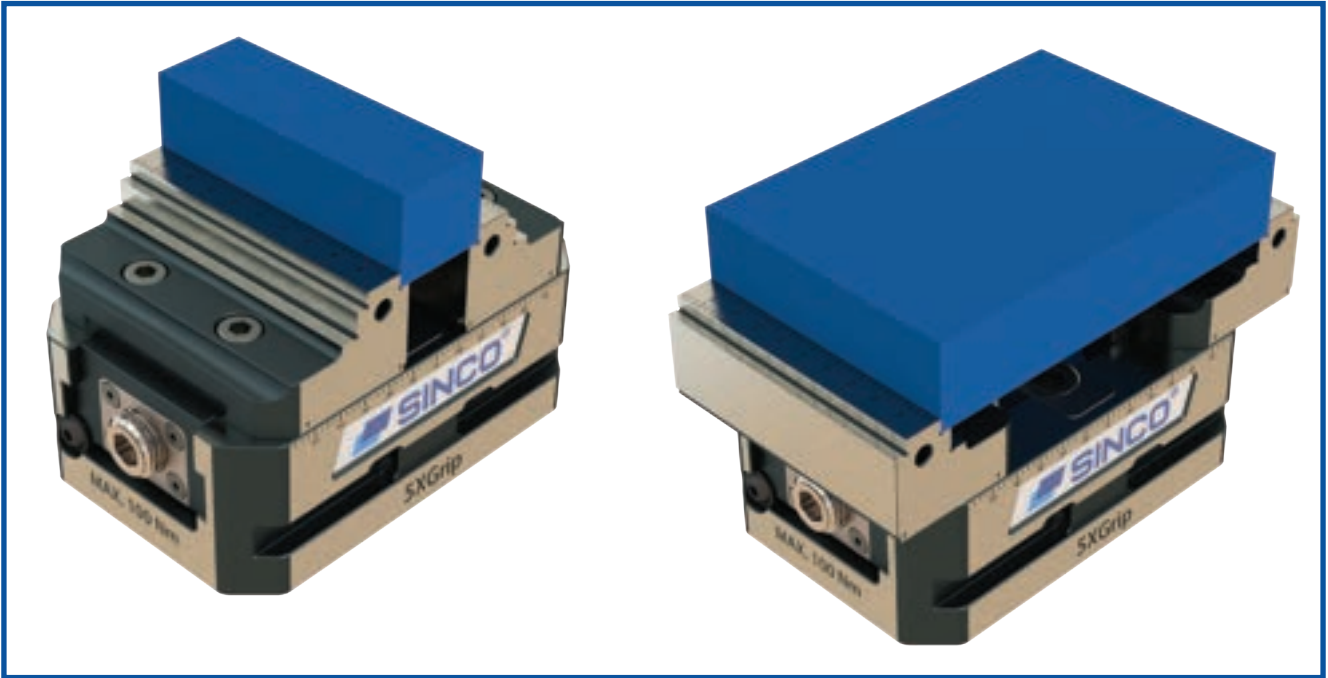


Order no.	Dimensions (mm)	Pitch (mm)	Clamping force (kN)	Weight (kg)
3B4-5100-0	150x100x85	2	25	6,55

- Introducing the 5XGRIP centering vise - a powerful, precise and reliable clamping vise, specially designed for use on multi-axis machining centers, zero-point pallet and automation systems. Boasting a compact yet robust design, the 5XGRIP ensures collision-free 5-axis machining while providing optimal workpiece accessibility. As a centric mechanical clamping vise, the 5XGRIP does not require a force amplifier and is manually operated for ease of use. It is the ideal tool for high-precision serial production, thanks to its modular reversible jaw design and enclosed spindle, which ensures superior clamping precision and reliability. In addition, the threaded spindle is encapsulated with a unique sealing system, making it highly reliable for use on dirt-intensive machining jobs and ensuring a long service life. The 5XGRIP's short and flat design boasts high clamping force, thanks to the integration of a large thread spindle. Furthermore, the vise's jaws are designed to be optimally supported with extra wide and sturdy jaw guidance, which allows for unparalleled clamping precision and high clamping forces. With the 5XGRIP centering vise, you can rest assured that your machining operations will be both efficient and precise.

Features:

- Special spindle encapsulation system with numerous seals.
- Special sealing nuts at the spindle end.
- Actuation through hexagon nut with a wrench and fine pre-adjustment possible with hexagon socket on the other side.
- Two types of jaws: raw grip for the setup of raw material and smooth jaws for the second setup.
- Four M10 thread holes with recess $\phi 12.50$ for centering on the underside in pattern 50x50 mm
- Two holes $\phi 12.50$ for dowel pins on the underside, at the longitudinal axis, 100.00 mm over the center.
- Ready to be used with clamp strap set.
- Material: hardened corrosion-resistant steel with functional surfaces and precision ground.
- Thread holes M6 available on the jaw sides enable mounting of Workpiece end-stops.
- Additional holes can be added on the underside to fit clamping on other systems.



Example: In this photo, we see a 5XGrip Centering Vise featuring adjustable jaws that can be easily rotated to suit the shape and size of the workpiece being clamped. The vise is designed to provide a stable grip on the workpiece, ensuring precision and accuracy during machining operations. The adjustable jaws make it versatile and suitable for use with a wide range of workpieces.

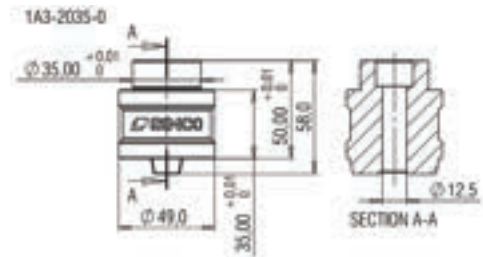


Example: 5XGrip Centering vise with a workpiece securely clamped on a MultiZero Clamp pallet. The vise is designed to center the workpiece and provide precise clamping for machining operations, while productivity is assured with quick-change pallets - in this case, MultiZero Clamp Pallet.

MultiZero Cylindrical Support D50 H50



- Cylindrical support with two support heights, 50 and 35 mm; tightened with M12 screw from the top; positioning rib on the underside

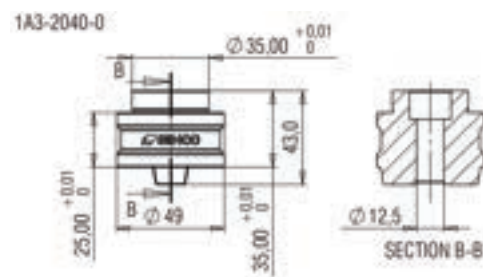


Order no.	Dimensions (mm)	Support height (mm)	Clamping force (kN)	Weight (kg)
1A3-2035-0	50x58	35 & 50	65	0,55

MultiZero Cylindrical Support D50 H35



- Cylindrical support with two support heights, 35 and 25 mm; tightened with M12 screw from the top; positioning rib on the underside

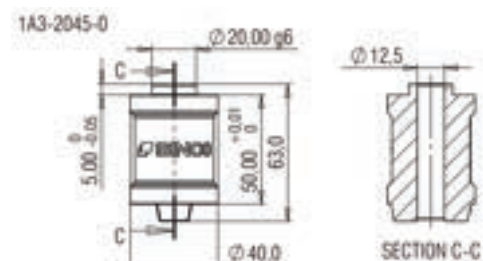


Order no.	Dimensions (mm)	Support height (mm)	Clamping force (kN)	Weight (kg)
1A3-2040-0	50x43	25 & 35	65	0,40

MultiZero Cylindrical Support D40 H50 D20



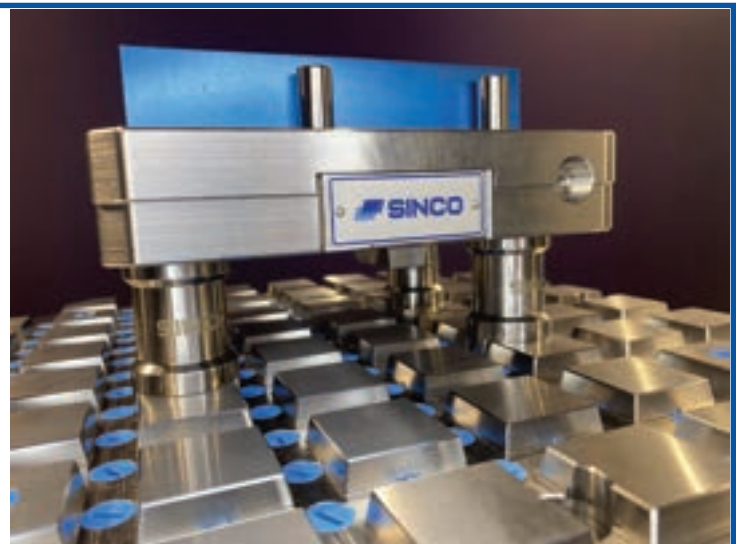
- Cylindrical support with diameter D20,00 g6 on top; used for lifting MultiZero System Pallet Types, through hole for bolt M12



Order no.	Dimensions (mm)	Support height (mm)	Clamping force (kN)	Weight (kg)
1A3-2045-0	40x63	50	N/A	0,39



Example: Cylindrical supports being used to provide additional support to a workpiece during machining operations. The support helps to center the workpiece and keep it stable, improving accuracy and precision. The cylindrical shape of the support makes it ideal for use with round or cylindrical workpieces. This support is commonly used in conjunction with other clamping devices to ensure optimal machining results. These supports also work as risers for pallets or workpieces.

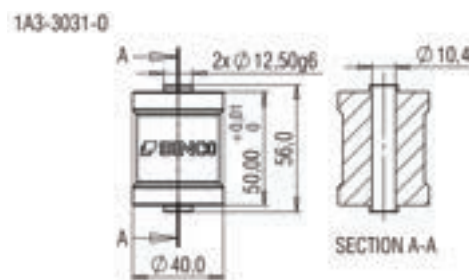


Real-life example: These cylindrical supports featured in the photo not only provide additional support to the workpiece during machining, but they can also function as a riser for pallets or workpieces. By elevating the workpiece, it becomes easier to access all sides and angles for machining. This can be particularly useful when working with complex shapes or irregular workpieces. The support's versatility and ability to serve multiple functions make it a valuable tool in any machining setting.

MultiZero Clamp Support D40 H50



- Workpiece supporting and lifting elements, through hole $\phi 10.5$

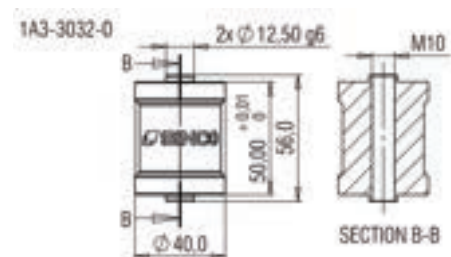


Order no.	Dimensions (mm)	Support height (mm)	Clamping force (kN)	Weight (kg)
1A3-3031-0	$\phi 40 \times 56$	50	$\phi 10,5$	0,30

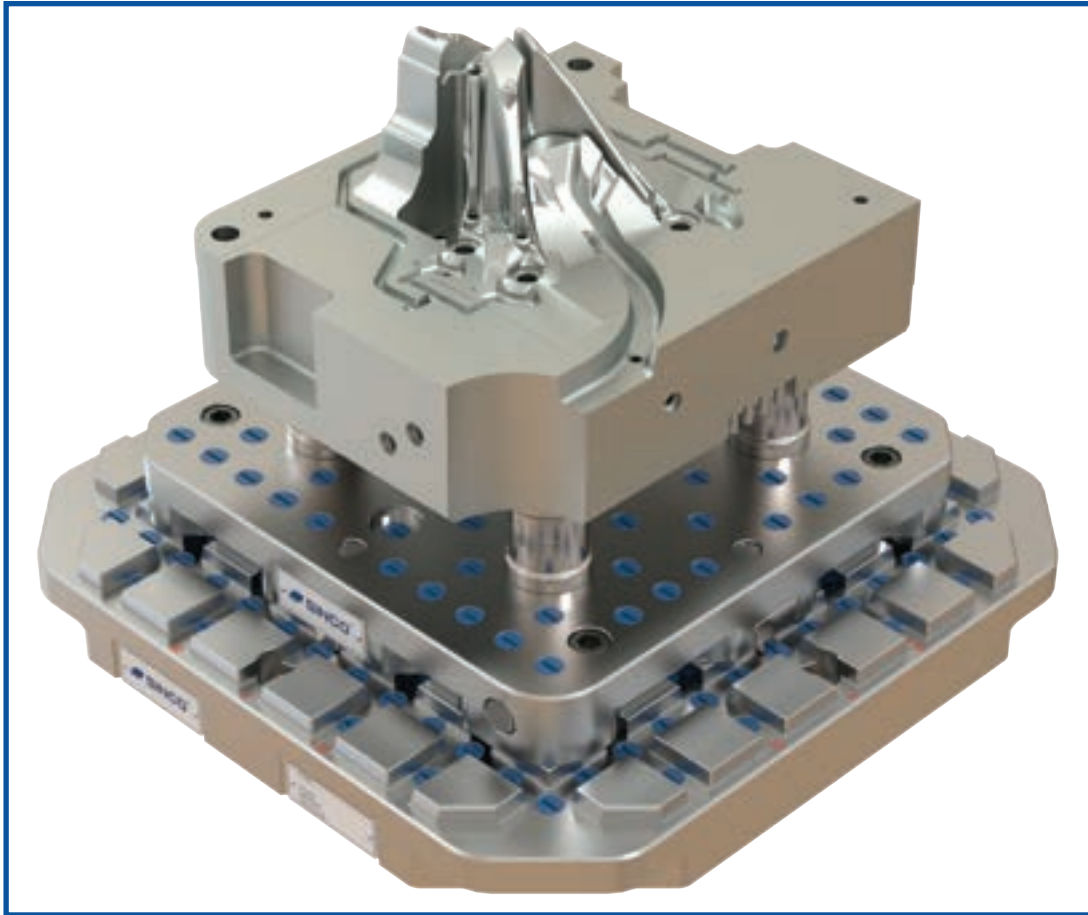
MultiZero Clamp Support Threaded D40 H50



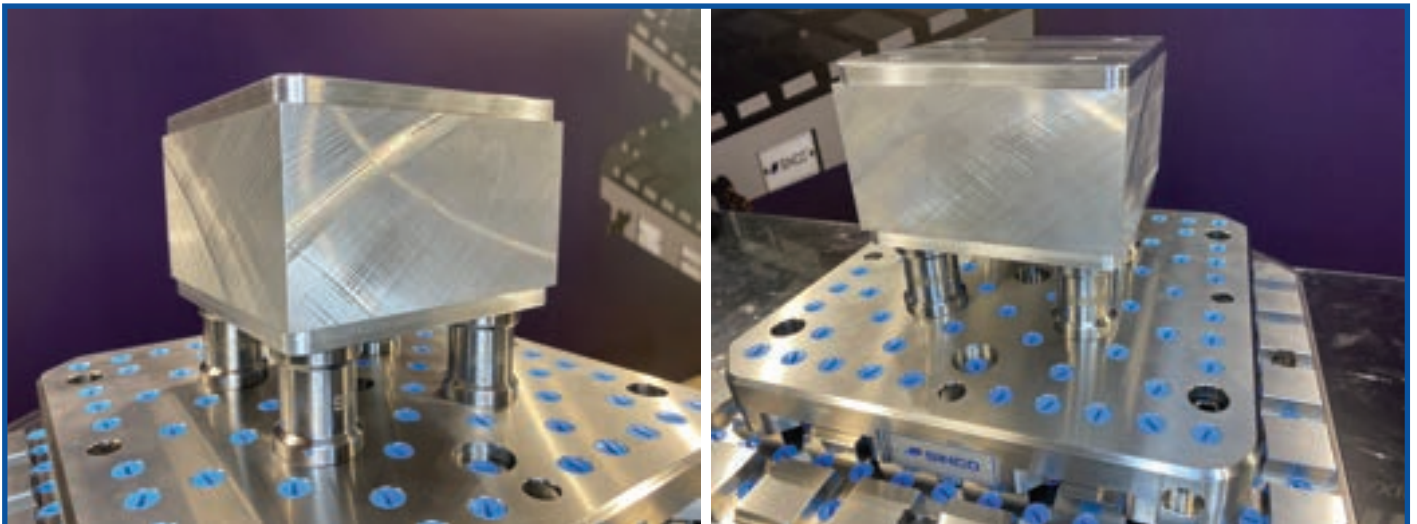
- Workpiece supporting and lifting elements, through threaded hole M10



Order no.	Dimensions (mm)	Support height (mm)	Clamping force (kN)	Weight (kg)
1A3-3032-0	$\phi 40 \times 56$	50	M10	0,35

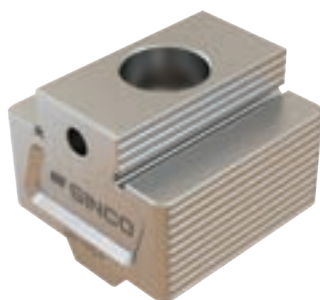


Example: Clamp supports used to raise the workpiece during machining operations. These supports are carefully positioned to provide additional clearance, making it easier to access all sides and angles of the workpiece.

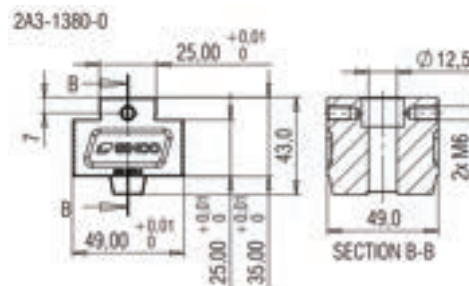


Real-life example: By lifting the workpiece, machinists can achieve better accuracy and precision during cutting and drilling operations. The clamp supports are designed to securely hold the workpiece in place while it is being elevated, ensuring that it remains stable and doesn't shift during machining.

MultiZero Support W50 L50C H35

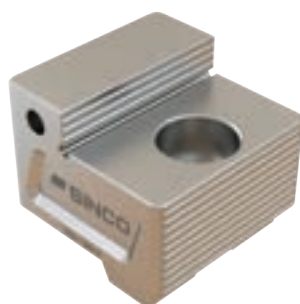


- Rectangular supports with various support heights
- Tightened with M12 screw from the top
- Single positioning rib on the bottom; Type C – centering rib in the center, Type E – centering rib in excentre
- Supporting the workpiece with surfaces parallel with positioning rib and with top surfaces
- M6 thread hole for supporting elements on the sides

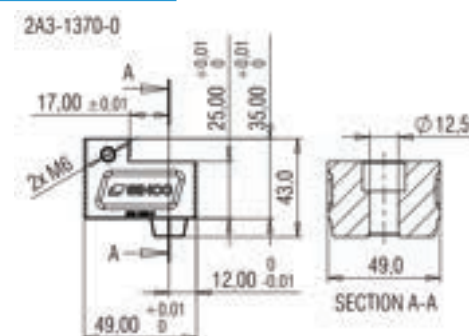


Order no.	Dimensions (mm)	Support height (mm)	Clamping force (kN)	Weight (kg)
1A3-1370-0	50x50x43	25 & 35	65	0,51

MultiZero Support W50 L50E H35

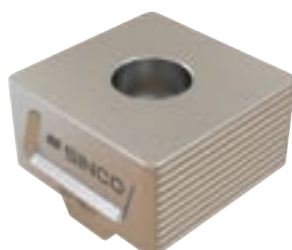


- Rectangular supports with various support heights
- Tightened with M12 screw from the top
- Single positioning rib on the bottom; Type C – centering rib in the center, Type E – centering rib in excentre
- Supporting the workpiece with surfaces parallel with positioning rib and with top surfaces
- M6 thread hole for supporting elements on the sides

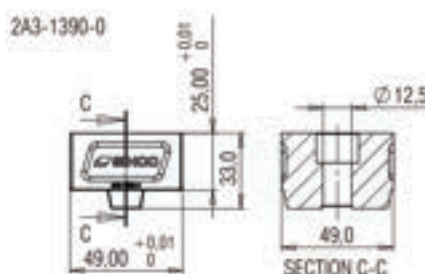


Order no.	Dimensions (mm)	Support height (mm)	Clamping force (kN)	Weight (kg)
1A3-1380-0	50x50x43	25 & 35	65	0,51

MultiZero Support W50 L50C H25

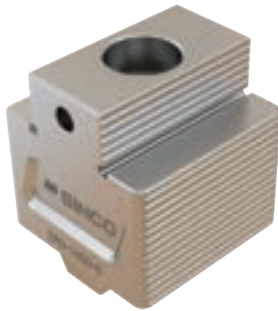


- Rectangular supports with various support heights
- Tightened with M12 screw from the top
- Single positioning rib on the bottom; Type C – centering rib in the center, Type E – centering rib in excentre
- Supporting the workpiece with surfaces parallel with positioning rib and with top surfaces
- M6 thread hole for supporting elements on the sides

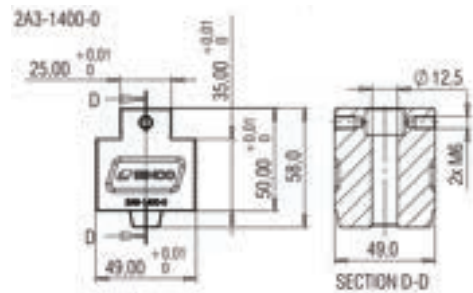


Order no.	Dimensions (mm)	Support height (mm)	Clamping force (kN)	Weight (kg)
1A3-1390-0	50x50x33	25	65	0,44

MultiZero Support W50 L50C H50

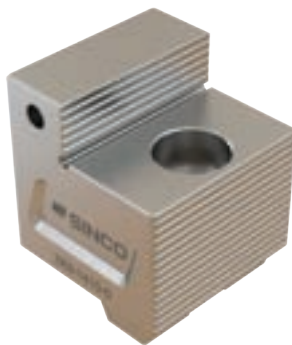


- Rectangular supports with various support heights
- Tightened with M12 screw from the top
- Single positioning rib on the bottom; Type C – centering rib in the center, Type E – centering rib in excentre
- Supporting the workpiece with surfaces parallel with positioning rib and with top surfaces
- M6 thread hole for supporting elements on the sides

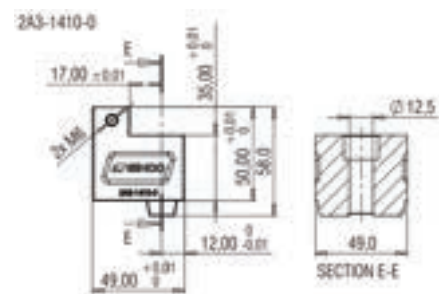


Order no.	Dimensions (mm)	Support height (mm)	Clamping force (kN)	Weight (kg)
1A3-1400-0	50x50x58	30	65	0,74

MultiZero Support W50 L50E H50

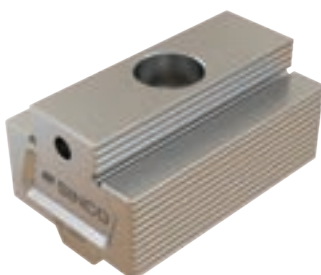


- Rectangular supports with various support heights
- Tightened with M12 screw from the top
- Single positioning rib on the bottom; Type C – centering rib in the center, Type E – centering rib in excentre
- Supporting the workpiece with surfaces parallel with positioning rib and with top surfaces
- M6 thread hole for supporting elements on the sides

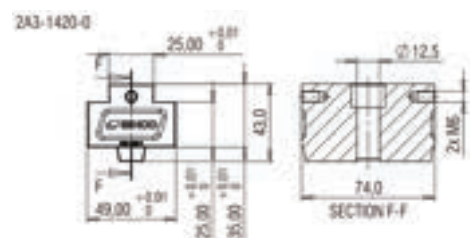


Order no.	Dimensions (mm)	Support height (mm)	Clamping force (kN)	Weight (kg)
1A3-1410-0	50x50x58	35	65	0,72

MultiZero Support W50 L75C H35

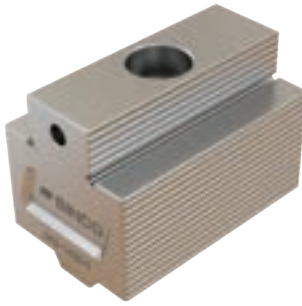


- Rectangular supports with various support heights
- Tightened with M12 screw from the top
- Single positioning rib on the bottom; Type C – centering rib in the center, Type E – centering rib in excentre
- Supporting the workpiece with surfaces parallel with positioning rib and with top surfaces
- M6 thread hole for supporting elements on the sides

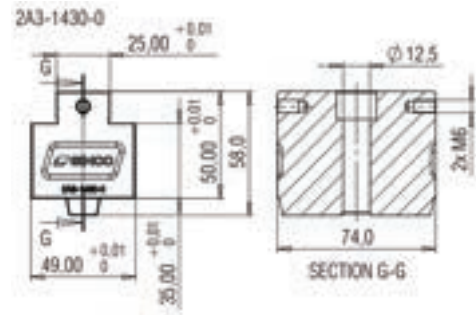


Order no.	Dimensions (mm)	Support height (mm)	Clamping force (kN)	Weight (kg)
1A3-1420-0	50x75x43	25 & 35	65	0,82

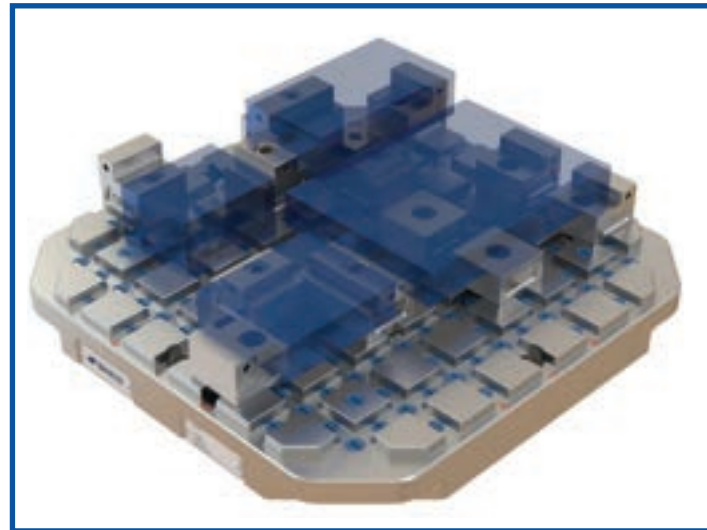
MultiZero Support W50 L75C H50



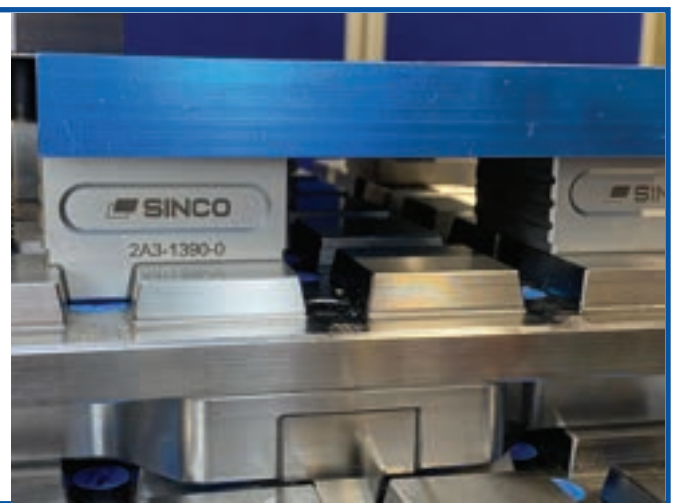
- Rectangular supports with various support heights
- Tightened with M12 screw from the top
- Single positioning rib on the bottom; Type C – centering rib in the center, Type E – centering rib in excentre
- Supporting the workpiece with surfaces parallel with positioning rib and with top surfaces
- M6 thread hole for supporting elements on the sides



Order no.	Dimensions (mm)	Support height (mm)	Clamping force (kN)	Weight (kg)
1A3-1430-0	50x75x58	35	65	1,16

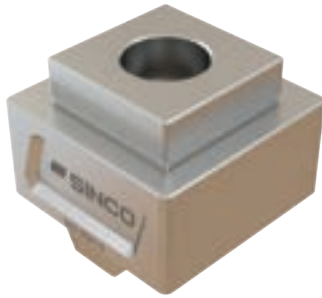


Example: MultiZero Supports W50, which are used to help center the workpiece during machining operations. These supports are carefully positioned to provide additional stability and ensure that the workpiece is securely held in place.

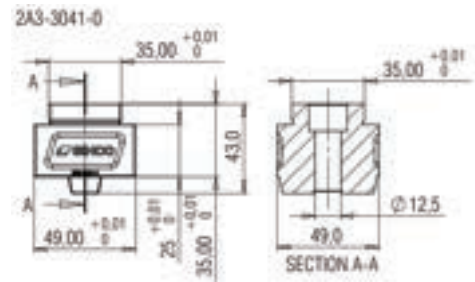


Real-life example: The MultiZero design allows for quick and easy adjustments, making it a versatile tool for use with a variety of workpiece sizes and shapes.

MultiZero Holder W50 H35

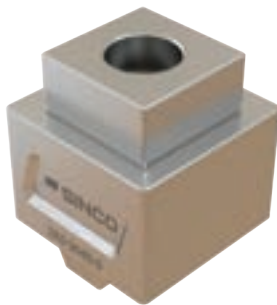


- Rectangular supports with various support heights
- Tightened with M12 screw from the top
- Single positioning rib on the bottom center
- Supporting the workpiece from all sides and top

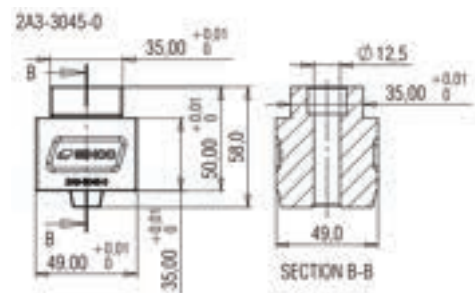


Order no.	Dimensions (mm)	Support height (mm)	Clamping force (kN)	Weight (kg)
2A3-3041-0	50x50x43	25 & 35	65	0,54

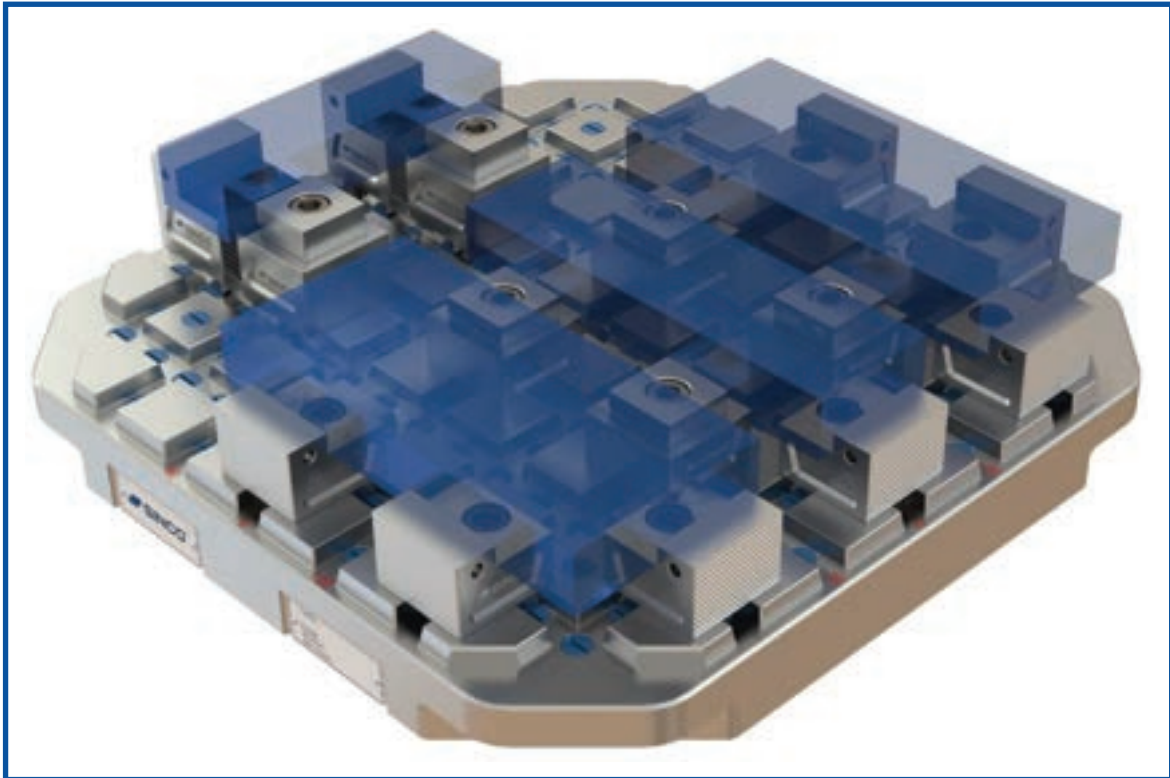
MultiZero Holder W50 H50



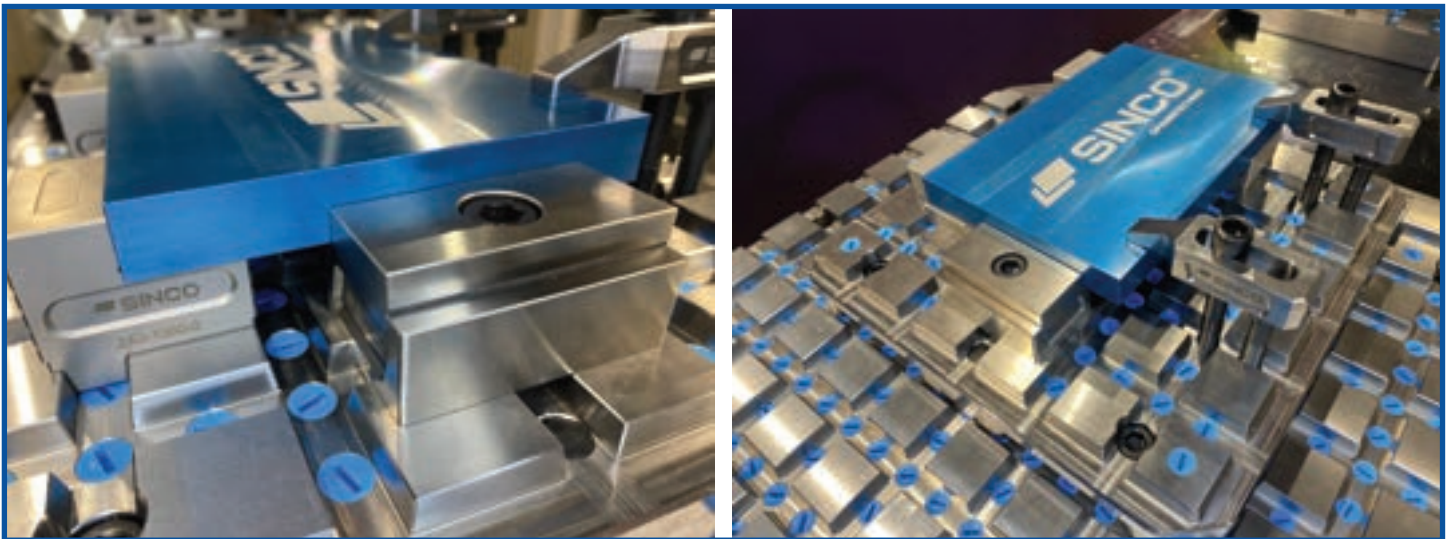
- Rectangular supports with various support heights
- Tightened with M12 screw from the top
- Single positioning rib on the bottom center
- Supporting the workpiece from all sides and top



Order no.	Dimensions (mm)	Support height (mm)	Clamping force (kN)	Weight (kg)
2A3-3045-0	50x50x58	35 & 50	65	0,75



Example: MultiZero Holders W50, which are a type of clamping device used in machining operations. These holders are designed to securely support the workpiece, ensuring stability and precision during cutting and drilling.

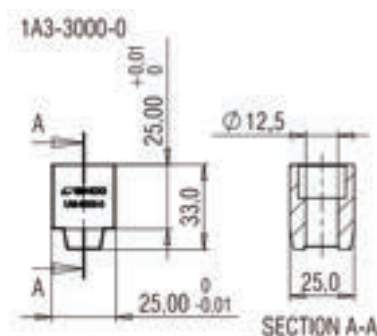


Real-life example: The MultiZero system allows for quick and easy adjustments, making it a versatile tool for use with a variety of workpiece sizes and shapes. With its reliable grip and user-friendly design, the MultiZero Holder W50 is a valuable addition to any machining setting.

MultiZero Stopper Rail L25 H25

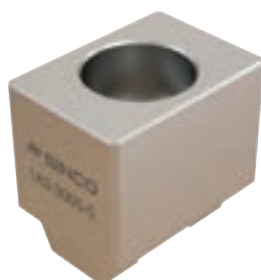


- Rectangular supporting rails
- Tightened with M12 screw from the top
- Supporting the workpiece with surfaces parallel with positioning rib and with top surfaces

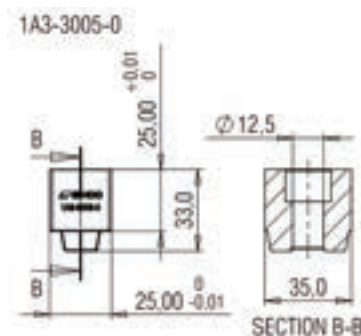


Order no.	Dimensions (mm)	Support height (mm)	Clamping force (kN)	Weight (kg)
1A3-3000-0	25x25x33	25	65	0,10

MultiZero Stopper Rail L35 H25



- Rectangular supporting rails
- Tightened with M12 screw from the top
- Supporting the workpiece with surfaces parallel with positioning rib and with top surfaces

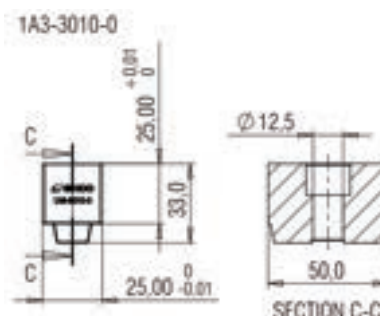


Order no.	Dimensions (mm)	Support height (mm)	Clamping force (kN)	Weight (kg)
1A3-3005-0	35x25x33	25	65	0,15

MultiZero Stopper Rail L50 H25



- Rectangular supporting rails
- Tightened with M12 screw from the top
- Supporting the workpiece with surfaces parallel with positioning rib and with top surfaces

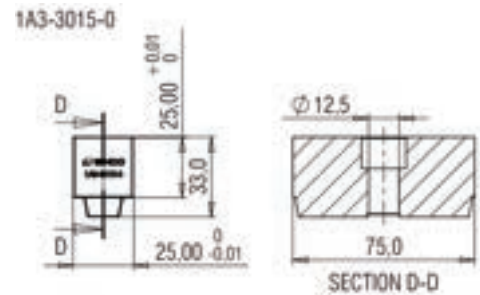


Order no.	Dimensions (mm)	Support height (mm)	Clamping force (kN)	Weight (kg)
1A3-3010-0	50x25x33	25	65	0,24

MultiZero Stopper Rail L75 H25



- Rectangular supporting rails
- Tightened with M12 screw from the top
- Supporting the workpiece with surfaces parallel with positioning rib and with top surfaces

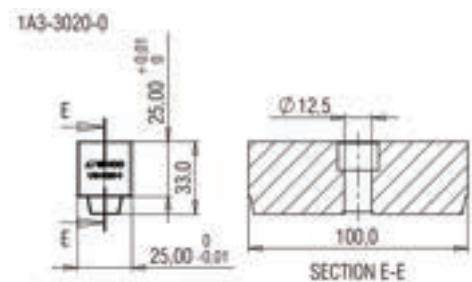


Order no.	Dimensions (mm)	Support height (mm)	Clamping force (kN)	Weight (kg)
1A3-3015-0	75x25x33	25	65	0,38

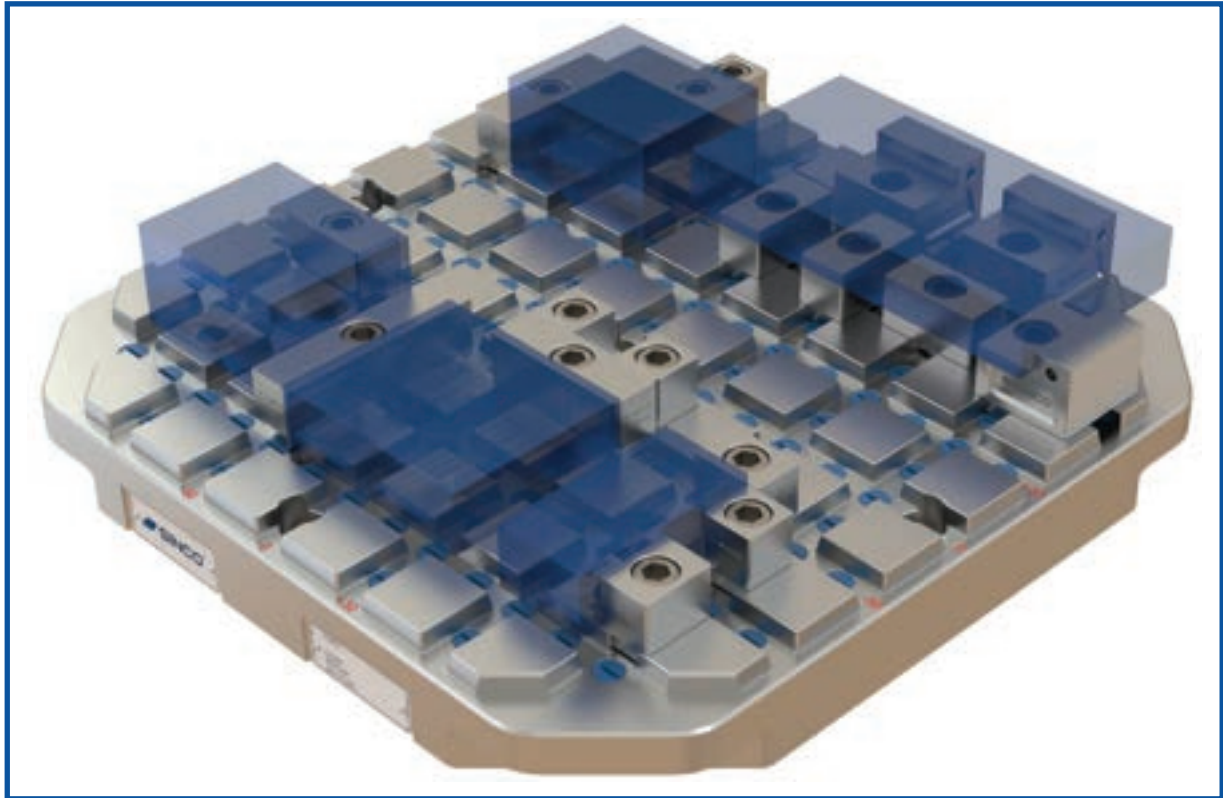
MultiZero Stopper Rail L100 H25



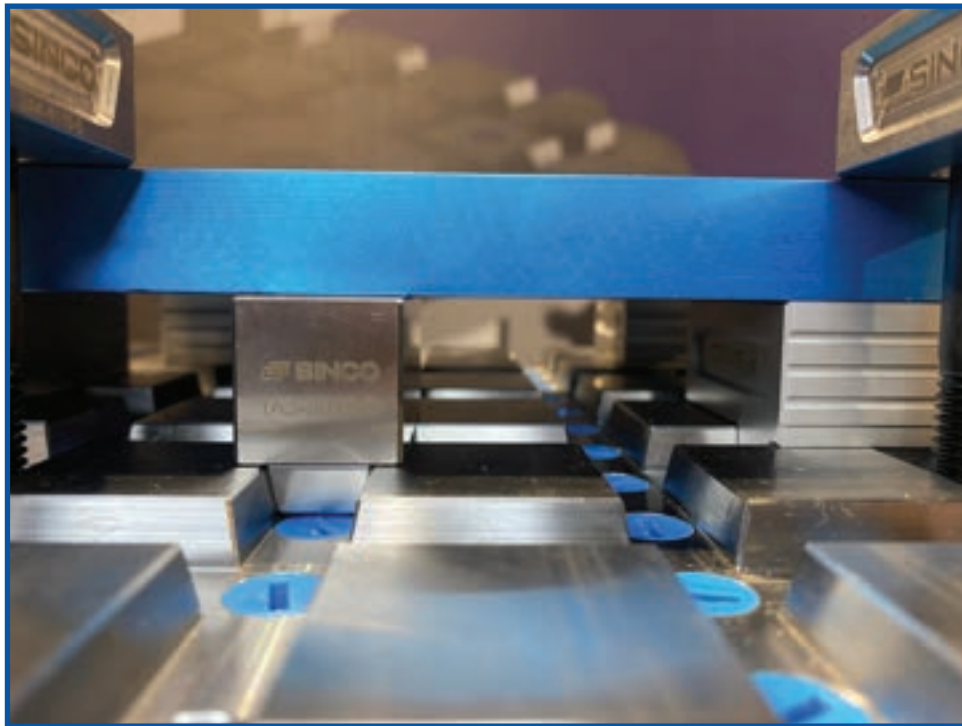
- Rectangular supporting rails
- Tightened with M12 screw from the top
- Supporting the workpiece with surfaces parallel with positioning rib and with top surfaces



Order no.	Dimensions (mm)	Support height (mm)	Clamping force (kN)	Weight (kg)
1A3-3020-0	100x25x33	25	65	0,52



Example: MultiZero Stopper Rails, which are a type of support rail used in conjunction with the MultiZero Clamping System. These rails can be positioned beside or underneath the workpiece to provide additional support during machining operations. The stopper design ensures that the workpiece remains securely in place, even during high-speed machining.



Real-life example: The rails are highly versatile and can be adjusted to accommodate a variety of workpiece sizes and shapes. By using MultiZero Stopper Rails with the MultiZero Clamping System, machinists can achieve optimal results with minimal effort. The modular design of the rails also allows for easy customization and integration with other MultiZero components.

MultiZero Slot Rail W16 L30



- Rails compatible with positioning grooves of the MultiZero system
- Connection Rails are used for connecting existing standard Vises and special fixtures with the MultiZero System
- Tightened with M6 screw from the underside
- Two widths available: 16,00 / 20,00
- Rails available upon request, please contact sales representative

Order no.	Dimensions (mm)	Positioning width (mm)	Positioning height (mm)	Weight (kg)
1A3-3405-0	16x30x15	16,00 g6	7,00	0.040

MultiZero Slot Rail W16 L40



- Rails compatible with positioning grooves of the MultiZero system
- Connection Rails are used for connecting existing standard Vises and special fixtures with the MultiZero System
- Tightened with M6 screw from the underside
- Two widths available: 16,00 / 20,00
- Rails available upon request, please contact sales representative

Order no.	Dimensions (mm)	Positioning width (mm)	Positioning height (mm)	Weight (kg)
1A3-3410-0	16x40x15	16,00 g6	7,00	0,058

MultiZero Slot Rail W20 L30



- Rails compatible with positioning grooves of the MultiZero system
- Connection Rails are used for connecting existing standard Vises and special fixtures with the MultiZero System
- Tightened with M6 screw from the underside
- Two widths available: 16,00 / 20,00
- Rails available upon request, please contact sales representative

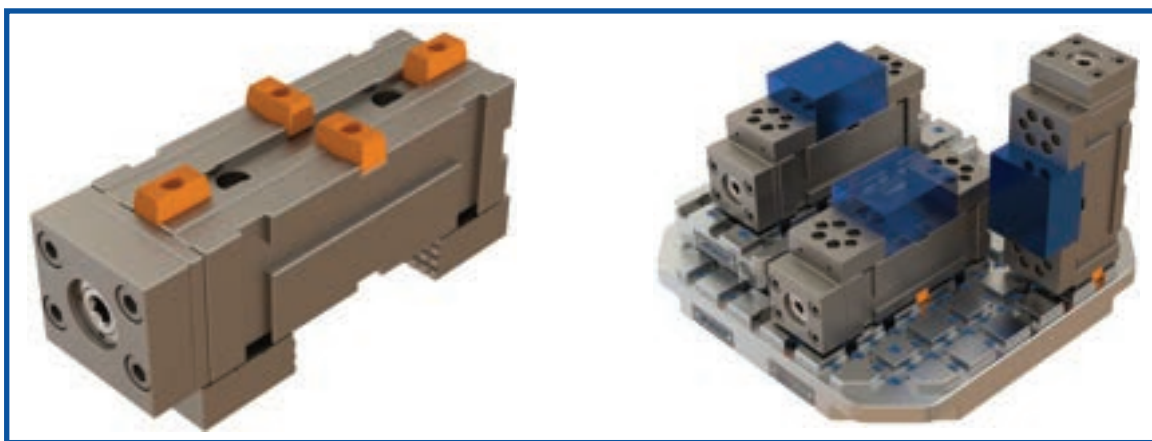
Order no.	Dimensions (mm)	Positioning width (mm)	Positioning height (mm)	Weight (kg)
1A3-3505-0	20x30x15	20,00 g6	7,00	0,047

MultiZero Slot Rail W20 L40

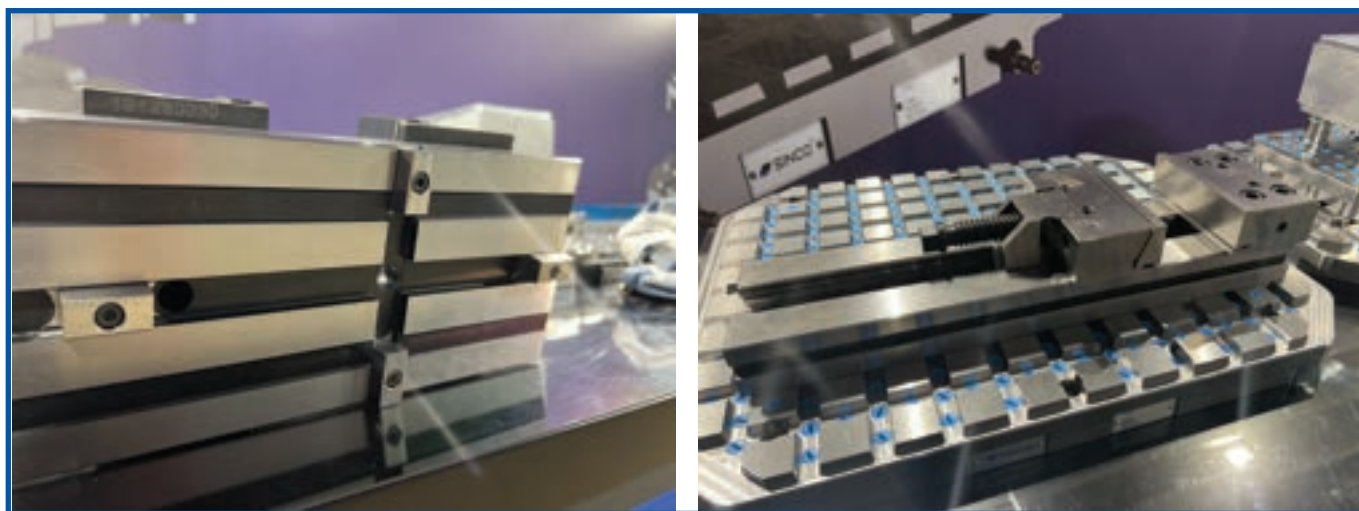


- Rails compatible with positioning grooves of the MultiZero system
- Connection Rails are used for connecting existing standard Vises and special fixtures with the MultiZero System
- Tightened with M6 screw from the underside
- Two widths available: 16,00 / 20,00
- Rails available upon request, please contact sales representative

Order no.	Dimensions (mm)	Positioning width (mm)	Positioning height (mm)	Weight (kg)
1A3-3515-0	20x40x15	16,00 g6	7,00	0.067



Example: MultiZero Slot rails, which are a type of positioning rail used in conjunction with the MultiZero Clamping System. These rails are designed to retrofit existing clamping equipment, allowing it to be used with the MultiZero system.

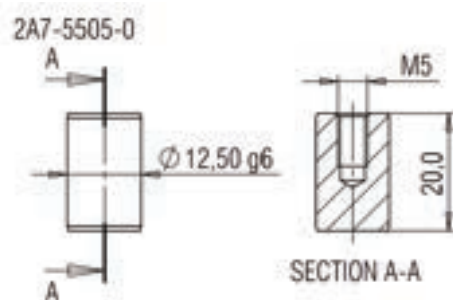


Real-life example: The rails are placed underneath the clamping equipment and provide precise positioning, ensuring that the workpiece is held securely in place. By retrofitting existing clamping equipment, machinists can save time and money while still achieving the benefits of the MultiZero system, including quick and easy adjustments and reliable stability during machining operations.

MultiZero Centering pin D12,5 L20



- Centering pins used for positioning Workpiece
- Used for mounting MultiZero Basic Pallets
- Compatible for use on MultiZero Clamp Pallets
- Compatible for use on MultiZero System
- Centering pins with diameter 12.50 g6

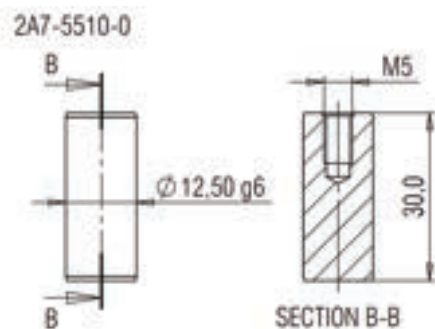


Order no.	Dimensions (mm)	Extraction thread	Weight (g)
2A7-5505-0	12,50g6x20	M5	17

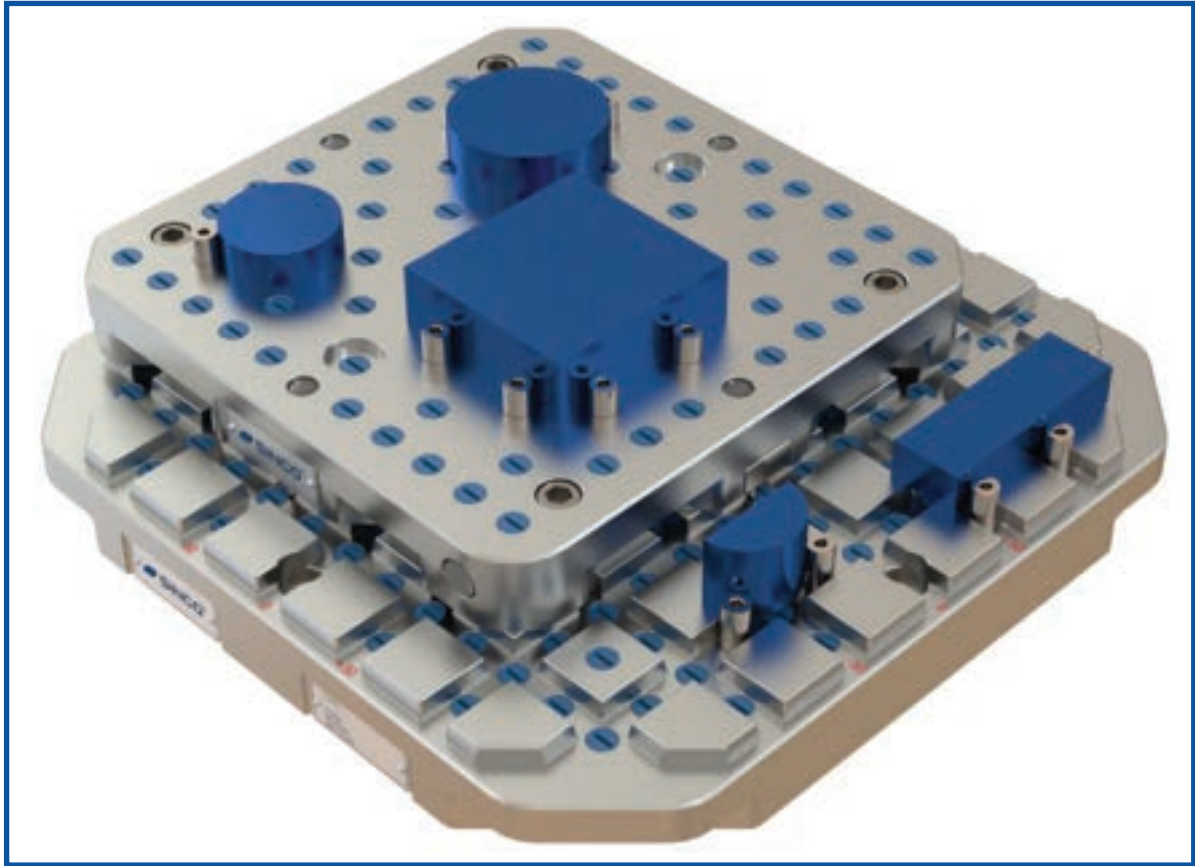
MultiZero Centering pin D12,5 L30



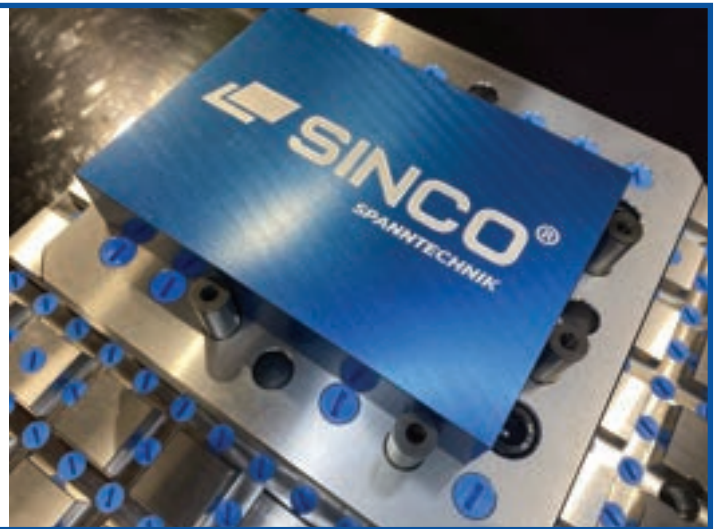
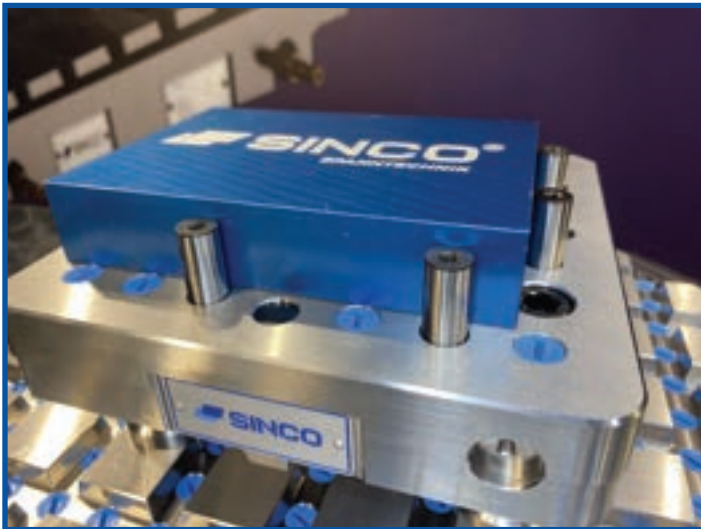
- Centering pins used for positioning Workpiece
- Used for mounting MultiZero Basic Pallets
- Compatible for use on MultiZero Clamp Pallets
- Compatible for use on MultiZero System
- Centering pins with diameter 12.50 g6



Order no.	Dimensions (mm)	Extraction thread	Weight (g)
2A7-5510-0	12,50g6x30	M5	27



Example: The photo showcases MultiZero Centering Pins, which are designed to be inserted into H7 holes on the MultiZero Base Plate or a Pallet. These pins help users to quickly and accurately center the workpiece for machining operations.

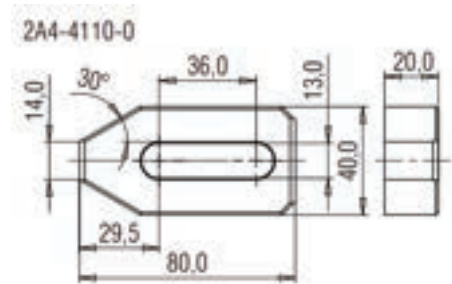


Real-life example: The pins are easy to insert and can be adjusted to suit a variety of workpiece sizes and shapes. By using centering pins in conjunction with the MultiZero Clamping System, machinists can achieve precise and accurate machining results with minimal effort.

MultiZero Clamp Type 1



- Clamps designed to best suite clamping within MultiZero System and MultiZero Clamp Pallets
- All items designed for clamping with bolt M12
- Clamp similar to DIN 6314 flat, bolt hole cutout 36 mm

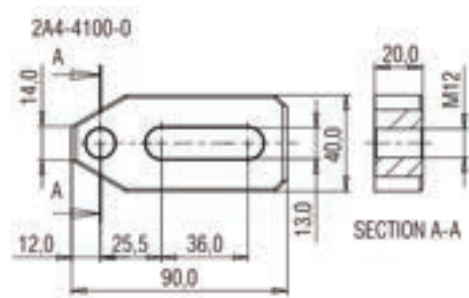


Order no.	Dimensions (mm)	Clamping width at clamp tip (mm)	Bolt hole opening center to	Weight (kg)
2A4-4110-0	40x80x20	14	36	0,34

MultiZero Clamp Type 2



- Clamps designed to best suite clamping within MultiZero System and MultiZero Clamp Pallets
- All items designed for clamping with bolt M12
- Flat clamp with tapped tip

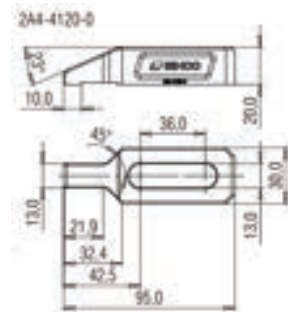


Order no.	Dimensions (mm)	Clamping width at clamp tip (mm)	Bolt hole opening center to	Weight (kg)
2A4-4100-0	40x90x20	14	36	0,38

MultiZero Clamp Type 3



- Clamps designed to best suite clamping within MultiZero System and MultiZero Clamp Pallets
- All items designed for clamping with bolt M12
- Flat clamp with reduced tip width

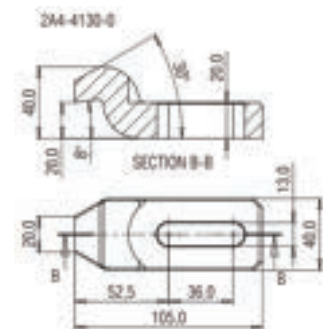


Order no.	Dimensions (mm)	Clamping width at clamp tip (mm)	Bolt hole opening center to	Weight (kg)
2A4-4120-0	30x95x20	13	36	0,23

MultiZero Clamp Type 4



- Clamps designed to best suite clamping within MultiZero System and MultiZero Clamp Pallets
- All items designed for clamping with bolt M12
- Clamp similar to DIN 6316 Goose neck

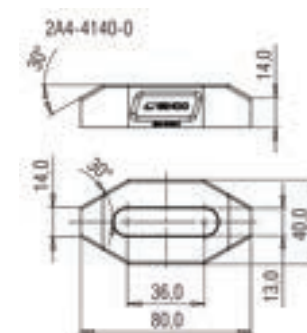


Order no.	Dimensions (mm)	Clamping width at clamp tip (mm)	Bolt hole opening center to	Weight (kg)
2A4-4130-0	40x105x40	20	36	0,56

MultiZero Clamp Type 5



- Clamps designed to best suite clamping within MultiZero System and MultiZero Clamp Pallets
- All items designed for clamping with bolt M12
- Double clamp, similar to MultiZero Clamp Type 1

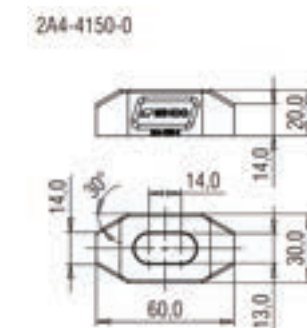


Order no.	Dimensions (mm)	Clamping width at clamp tip (mm)	Bolt hole opening center to	Weight (kg)
2A4-4140-0	40x80x20	14	36	0,29

MultiZero Clamp Type 6

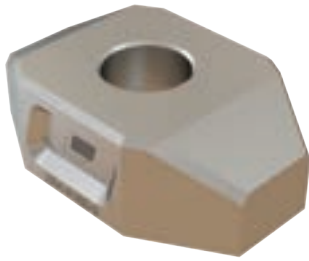


- Clamps designed to best suite clamping within MultiZero System and MultiZero Clamp Pallets
- All items designed for clamping with bolt M12
- Double clamp with reduced length

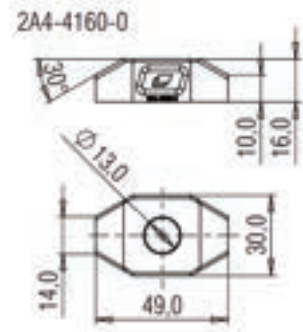


Order no.	Dimensions (mm)	Clamping width at clamp tip (mm)	Bolt hole opening center to	Weight (kg)
2A4-4150-0	30x60x20	14	14	0,18

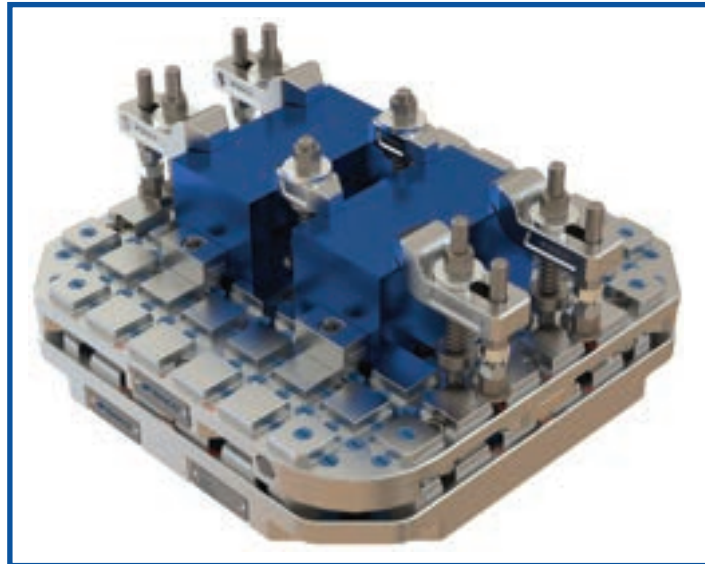
MultiZero Clamp Type 7



- Clamps designed to best suite clamping within MultiZero System and MultiZero Clamp Pallets
- All items designed for clamping with bolt M12
- Double clamp with reduced height



Order no.	Dimensions (mm)	Clamping width at clamp tip (mm)	Bolt hole opening center to	Weight (kg)
2A4-4160-0	30x49x16	14	φ13	0,13



Example: The photo showcases MultiZero Clamps, which are a type of clamping device used in conjunction with the MultiZero Clamping System. These clamps are designed to securely hold the workpiece in place during machining operations.



Real-life example: They are easy to adjust and can be used with a variety of workpiece sizes and shapes. By using MultiZero Clamps with the MultiZero system, machinists can achieve reliable stability and precise positioning of the workpiece, resulting in optimal machining results.

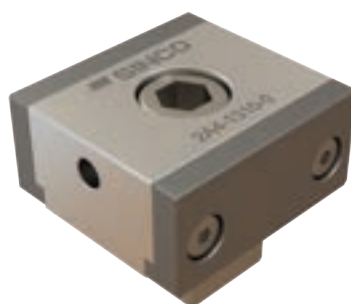
MultiZero Vise Single Wedge W50 H23



- • Single wedge clamp, with replaceable jaws
- Positioning adjustment, pitch 2.5 mm
- Replaceable jaws with positive down force
- Special design protects jaws from dirt

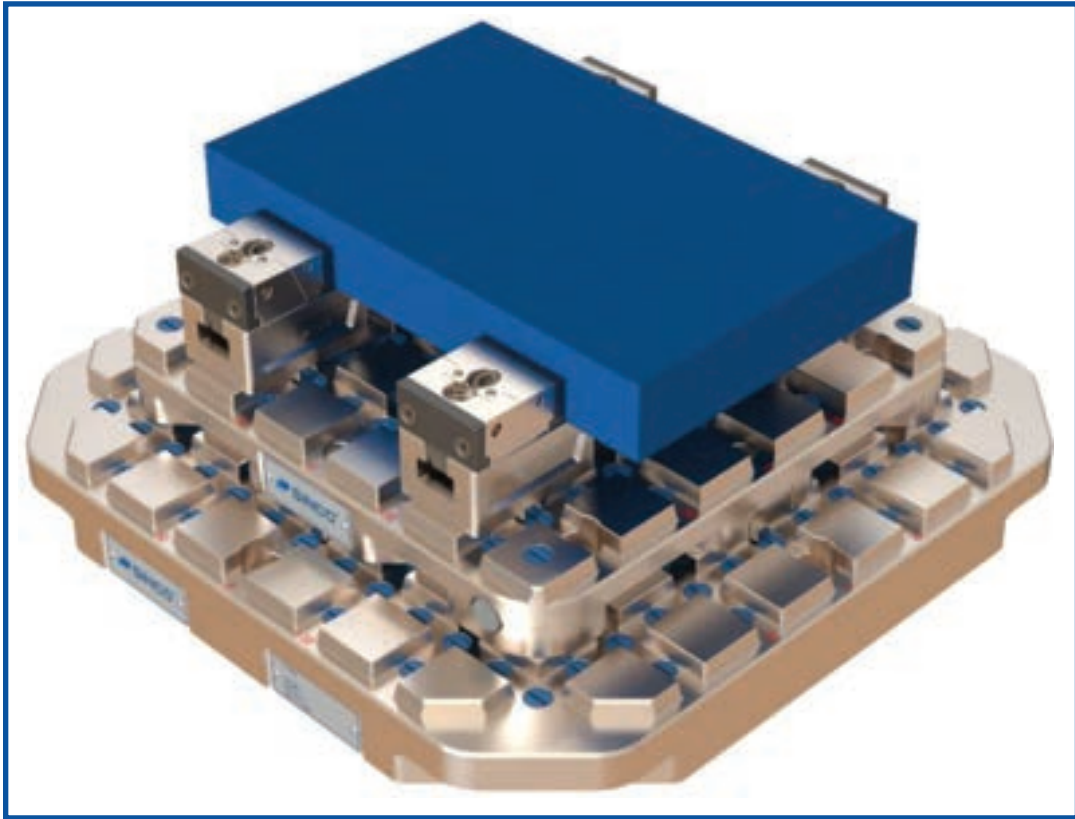
Order no.	Dimensions (mm)	Pitch (mm)	Clamping force (kN)	Weight (kg)
2B4-1110-0	50x48.6-51.6x35	2,5	15	0,53

MultiZero Vise Stopper W50 H23



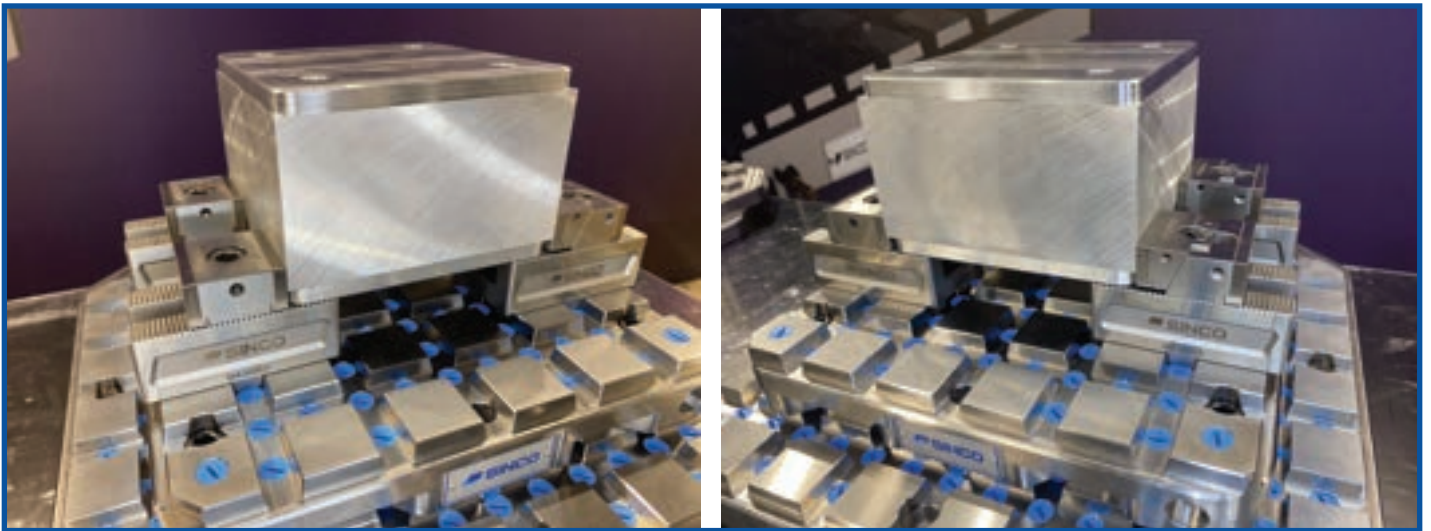
- • Stopper, with replaceable jaws
- Positioning adjustment, pitch 2.5 mm
- Replaceable jaws with positive down force
- Special design protects jaws from dirt

Order no.	Dimensions (mm)	Support height (mm)	Clamping force (kN)	Weight (kg)
2B4-1310-0	50x46x23 (41.5)	2,5	50	0,45



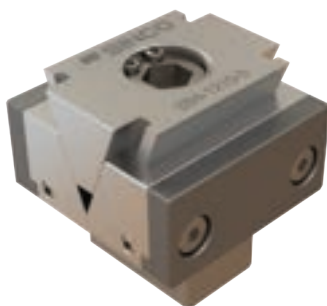
Real-life example: MultiZero Vise Single Wedge, is a modular vise that can be moved in an array of 50mm increments.

This vise is designed to be highly versatile, allowing for quick and easy adjustments to accommodate a variety of workpiece sizes and shapes. The single wedge design ensures reliable stability and secure clamping during machining operations.



Real-life example: By using the MultiZero Vise Single Wedge in conjunction with the MultiZero Clamping System, machinists can achieve optimal results with minimal effort. The modular design of the vise also allows for easy customization and integration with other MultiZero components.

MultiZero Vise Double Wedge W50 H23



- • Double wedge vise with replaceable jaws
- Replaceable jaws with positive down force

Order no.	Dimensions (mm)	Clamping force (kN)	Weight (kg)
2B4-1210-0	50x51- 58.2x23	2x30	0,52

MultiZero Single Stopper W50 L50E H23



- Stopper element, support height 35 mm

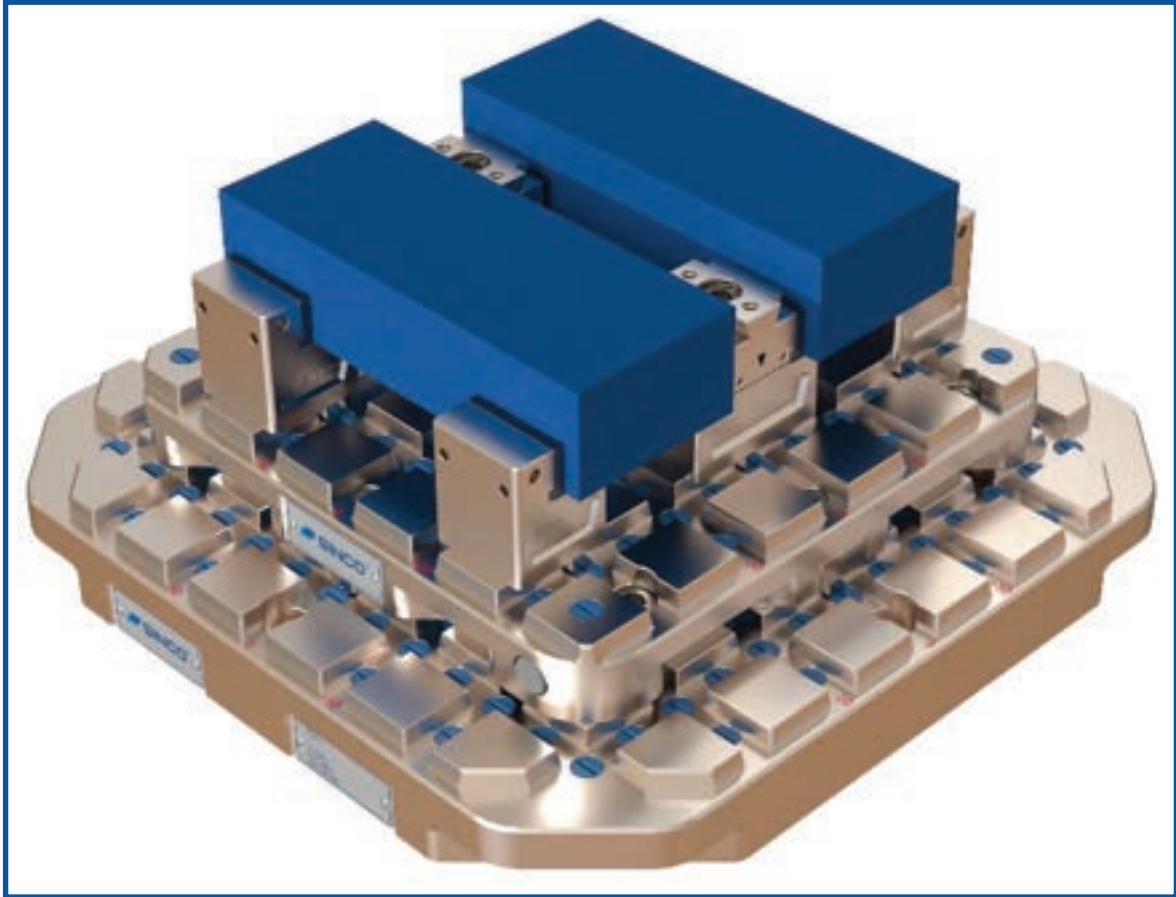
Order no.	Dimensions (mm)	Clamping force (kN)	Weight (kg)
2B3-1360-0	50x50x66 (58)	65	0,89

MultiZero Single Stopper W50 L100E H23

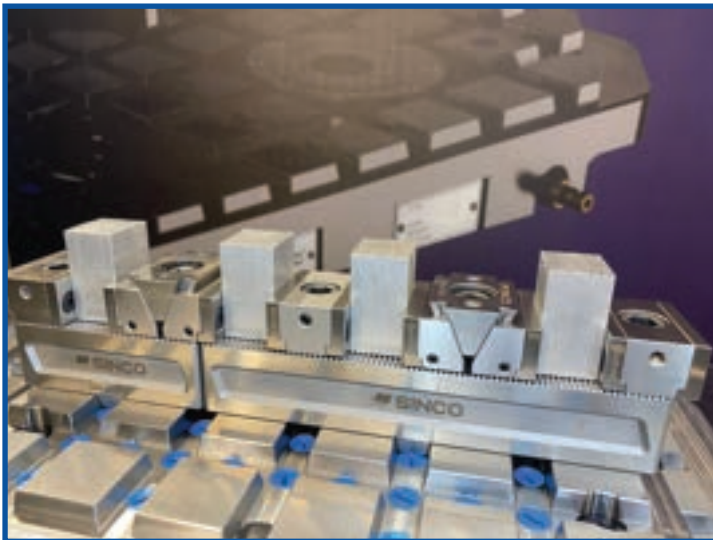


- Stopper element, support height 35 mm

Order no.	Dimensions (mm)	Clamping force (kN)	Weight (kg)
2B3-1340-0	50x100x66 (58)	65	1,55



Real-life example: MultiZero Vise Double Wedge, which is a modular vise that can be moved in an array of 50mm increments. The double wedge design allows for the clamping of multiple workpieces at once, making it ideal for serial production. The vise provides reliable stability and secure clamping during machining operations, ensuring optimal results.



Real-life example: By using the MultiZero Vise Double Wedge in conjunction with the MultiZero Clamping System, machinists can achieve efficient and precise production with minimal effort. The modular design of the vise also allows for easy customization and integration with other MultiZero components.

MultiZero Rail W50 L50C



- • Rail with positioning pitch 2,5 mm
- Support height 35 mm

Order no.	Dimensions (mm)	Pitch (mm)	Clamping force (kN)	Weight (kg)
2B4-1210-0	50x35x50	2,5	65	0,48

MultiZero Rail W50 L75E



- • Rail with positioning pitch 2,5 mm
- Support height 35 mm

Order no.	Dimensions (mm)	Pitch (mm)	Clamping force (kN)	Weight (kg)
2A4-2015-0	50x35x75	2,5	65	0,72

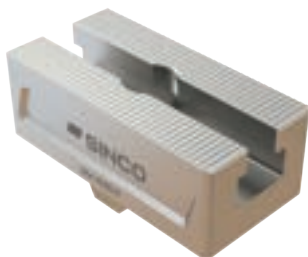
MultiZero Rail W50 L75C



- • Rail with positioning pitch 2,5 mm
- Support height 35 mm

Order no.	Dimensions (mm)	Pitch (mm)	Clamping force (kN)	Weight (kg)
2A4-2016-0	50x35x75	2,5	65	1,72

MultiZero Rail W50 L100C



- • Rail with positioning pitch 2,5 mm
- Support height 35 mm

Order no.	Dimensions (mm)	Pitch (mm)	Clamping force (kN)	Weight (kg)
2B3-2020-0	50x35x100	2,5	65	0,96

MultiZero Rail W50 L125E



- • Rail with positioning pitch 2,5 mm
- Support height 35 mm

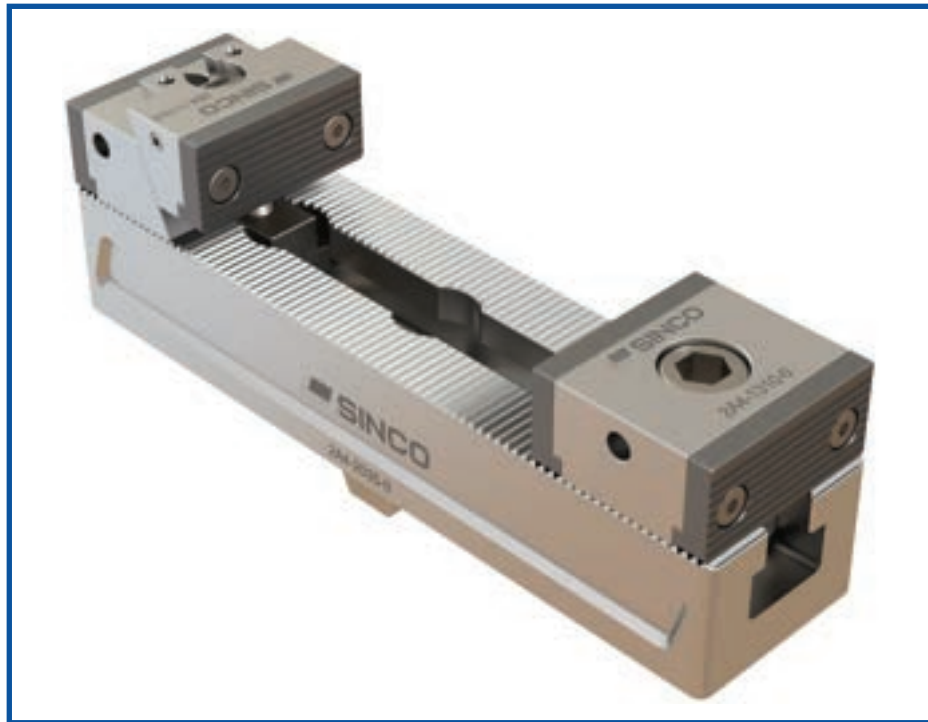
Order no.	Dimensions (mm)	Pitch (mm)	Clamping force (kN)	Weight (kg)
2A4-2025-0	50x35x125	2,5	65	1,17

MultiZero Rail W50 L200C



- • Rail with positioning pitch 2,5 mm
- Support height 35 mm

Order no.	Dimensions (mm)	Pitch (mm)	Clamping force (kN)	Weight (kg)
2A4-2035-0	50x35x200	2,5	65	1,86



Example: MultiZero Rails, which form the base of the MultiZero Vise system. These rails are available in different sizes to suit a variety of workpiece dimensions. Customers can select the appropriate rail size and add a single or double vise wedge to create a MultiZero Vise Single Wedge or Double Wedge.



Real-life example: The system is highly modular, allowing for easy customization and integration with other MultiZero components. The rails provide a secure foundation for the vise, ensuring reliable stability and precise positioning during machining operations. By using the MultiZero Vise system in conjunction with the MultiZero Clamping System, machinists can achieve optimal results with minimal effort.



 **SINCO**®
SPANNTÉCHNIK



INCO®
SPANNTÉCHNIK



W www.sinco.eu
E info@sinco.eu